



6 Bult Close Miners Rest VIC

3 2 5

Set on a generous 743m² (approx.) allotment in a well-established neighbourhood directly opposite parkland, this beautifully presented residence delivers an outstanding combination of space, comfort and versatility, with quality indoor and outdoor living throughout. The home comprises three well-proportioned bedrooms, all fitted with built-in robes, while the master suite features a walk-in robe and private ensuite. Designed for modern living, the spacious open-plan kitchen, dining and living zone forms the heart of the home, showcasing stone benchtops, excellent storage and ample preparation space. A second separate living area further enhances the flexible floorplan, providing additional room to relax or entertain. The central bathroom is well appointed with a separate spa bath and shower, complemented by a full-sized laundry. Year-round comfort is assured ...

Price : \$695,000 - \$745,000

Land Size : 748 sqm

View : <https://www.ballaratrealestate.com.au/sale/vic/ballarat-western-district/miners-rest/residential/house/8701848>



Mitchell Burgess
03 5331 2233
0458019897

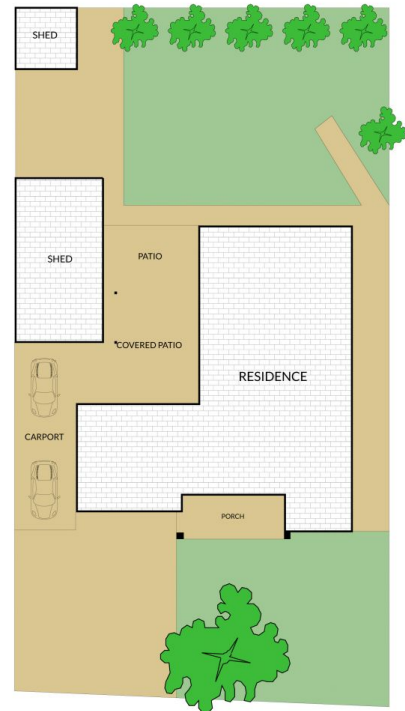
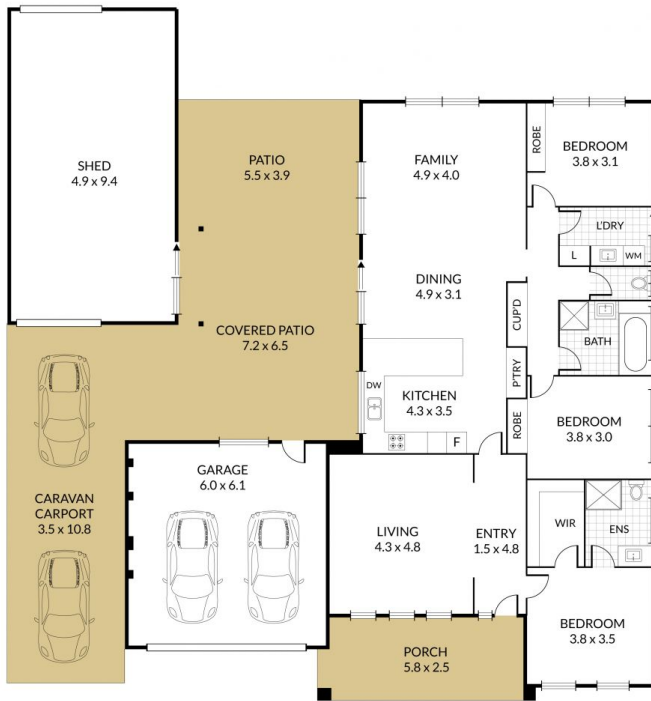
Internal 185m² External 558m² Land Size 743m²

6 Bult Close, Miners Rest



3 x 2 x 4 x

NORTH



NOTE: Every precaution has been taken to verify the accuracy of the above details. However, prospective purchasers are advised to make their own enquiries.