



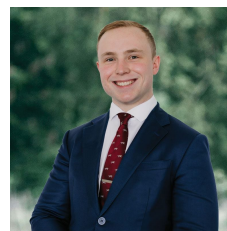
1 Chifley Drive Delacombe VIC

3 2 2

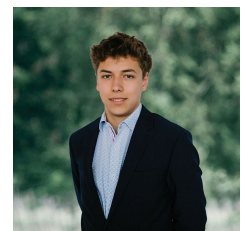
Positioned proudly on a desirable corner allotment, this beautifully presented home delivers the perfect blend of modern comfort, functional design and low-maintenance living. Stepping inside, you're welcomed by a light-filled layout that flows seamlessly through to a nice, neat kitchen complete with stainless steel appliances, ample storage and generous bench space, all overlooking the open plan meals and living zone ideal for everyday family life and entertaining alike. Comfort is assured year-round with central heating and split system cooling, while modern shutter style window coverings add a sleek contemporary touch throughout the home. Accommodation is well catered for with three spacious bedrooms including a master with walk in robe and private ensuite, while the remaining bedrooms are serviced by a central bathroom and separate WC. Outdoors, the deck ...

Price : \$ 560,505

View : <https://www.ballaratrealestate.com.au/sale/vic/ballarat-western-district/delacombe/residential/house/8621615>



Lachlan Sylvia
03 53312233
0458 068 234



Tulley Pelham
03 5331 2233
0490 013 121



DISCLAIMER

PLANS SHOWN ARE FOR MARKETING PURPOSES ONLY. ALL DIMENSIONS ARE APPROXIMATE AND NOT TO SCALE. THEY ARE SUBJECT TO ERRORS AND INACCURACIES AND NO LIABILITY WILL BE ACCEPTED. INTERESTED PARTIES SHOULD MAKE THEIR OWN INQUIRIES.

Ballarat
Real Estate

