



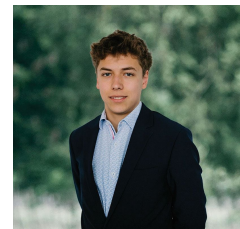
11 Dakshina Court Delacombe VIC

Positioned in a quiet and established court, 11 Dakshina Court, Delacombe presents an outstanding opportunity to secure approximately 496m² of residential land, offering the perfect foundation to design and build a home that suits your lifestyle. The allotment features a wide frontage and an ideal shape, providing flexibility for a range of modern home designs while maximising space, light and privacy. Set amongst quality homes and surrounded by family-friendly streetscapes, this location combines peaceful living with everyday convenience, just minutes from Delacombe Town Centre, schools, parks, sporting facilities and easy access to Ballarat CBD. Whether you're a first-home buyer, growing family or savvy investor, this is a rare chance to secure a well-sized block in a tightly held pocket. Opportunities like this are increasingly hard to find - contact Ball ...

Price : \$ 280,000
Land Size : 496 sqm
View : <https://www.ballaratrealestate.com.au/sale/vic/ballarat-western-district/delacombe/residential/land/8610649>



Lachlan Sylvia
 03 53312233
 0458 068 234



Tulley Pelham
 03 5331 2233
 0490 013 121