



31 Raptor Lane Winter Valley VIC

3 2 2

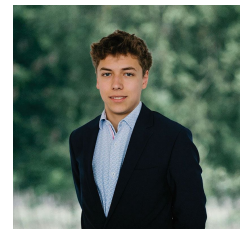
Perfectly positioned in a peaceful pocket of Winter Valley, this stylish two-storey home delivers low-maintenance living without compromising on quality, comfort or design. With a contemporary façade, immaculate presentation, and direct access from both the front and rear of the property, it's an exceptional opportunity for first-home buyers, professionals or investors seeking a modern home moments from parklands and key amenities. Step inside to discover light-filled living zones enhanced by sleek floorboards, central heating and cooling, and clever storage throughout. The open-plan kitchen, dining and family area forms the heart of the home, complete with stainless-steel appliances, tiled splashback, generous cabinetry and a built-in laundry trough with additional storage seamlessly integrated into the layout. Sliding doors open to a private backyard, off ...

Price : \$525,000 - \$575,000

View : <https://www.ballaratrealestate.com.au/sale/vic/ballarat-western-district/winter-valley/residential/townhouse/8604192>



Lachlan Sylvia
03 53312233
0458 068 234



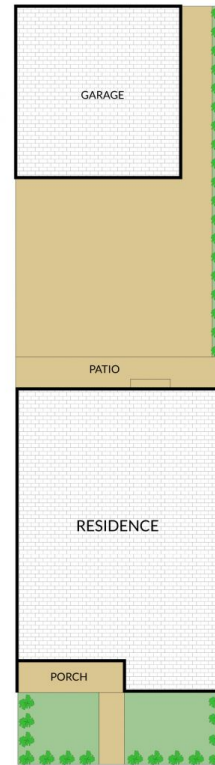
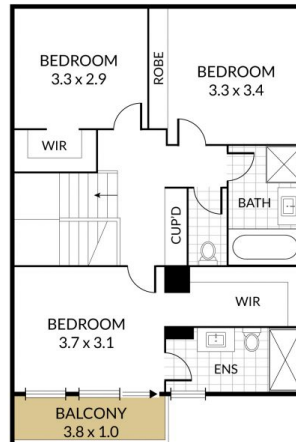
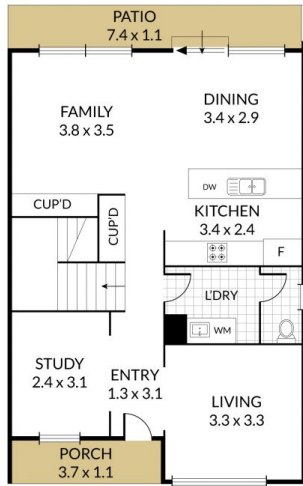
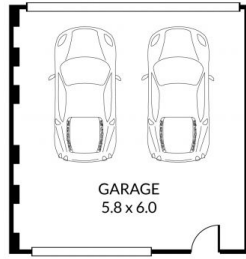
Tulley Pelham
03 5331 2233
0490 013 121

Internal 144m² External 50m² Total 194m² Land Size 210m²

31 Raptor Lane, Winter Valley



3 x 2 x 2 x



NOTE: Every precaution has been taken to verify the accuracy of the above details. However, prospective purchasers are advised to make their own enquiries.