



34 Bonshaw Drive Sebastopol VIC

3 2 4

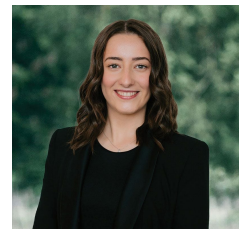
BOOK YOUR INSPECTION ONLINE 24/7 Click "Book an Inspection Time" to select a time that is suitable for you. Alternatively, go to our website ballaratrealestate.com.au and press the BOOK INSPECTION button to register for a time that suits you.

Land Size : 587 sqm
View : <https://www.ballaratrealestate.com.au/lease/vic/ballarat-western-district/sebastopol/residential/house/8600907>

Beautifully presented and set on a spacious corner block, this inviting sandstone brick home offers a wonderful blend of warmth, comfort, and functionality. Beyond its appealing timber fence and established front garden, you'll discover a residence designed for easy family living. Step inside to find three generous bedrooms, each filled with natural light, and decorative ceiling features that add a touch of character throughout. The home offers year-round comfort



Reynaldo Rilen
03 53312233



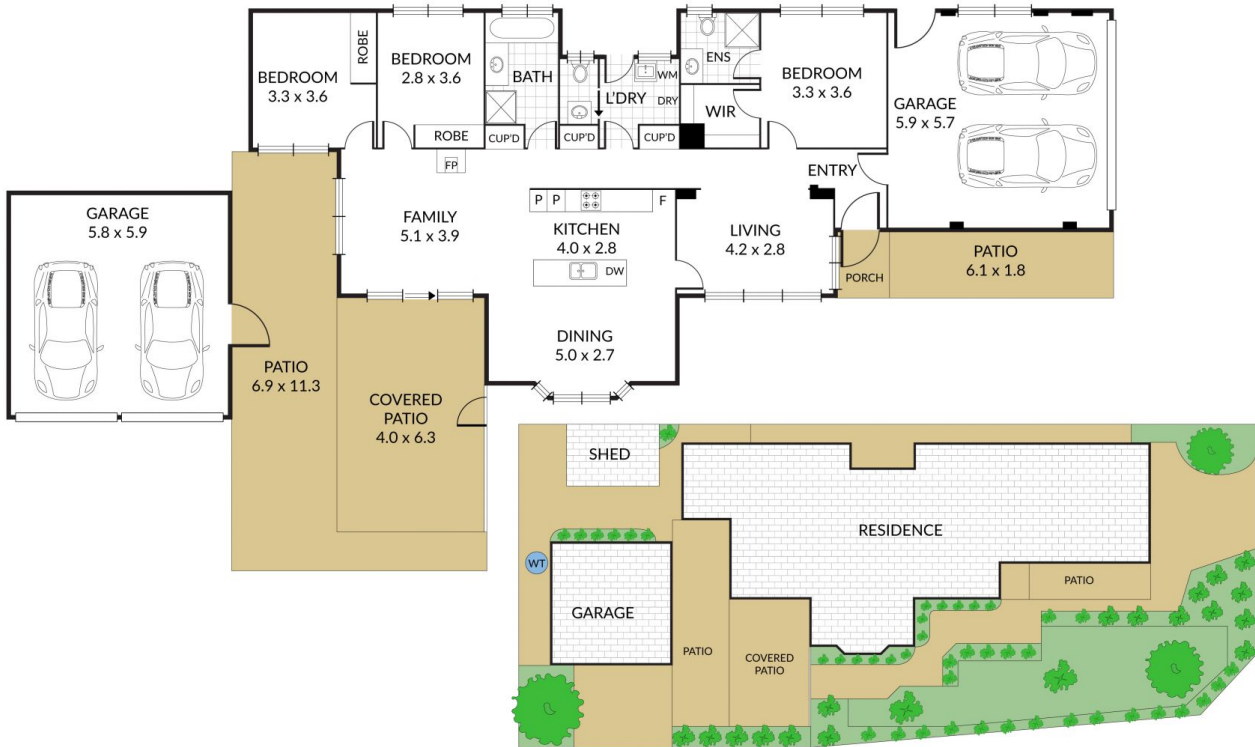
Mikayla Watt
5331 2233

Internal 160m² External 427m² Total 587m²

34 Bonshaw Drive, Sebastopol



3 x 2 x 4 x



NOTE: Every precaution has been taken to verify the accuracy of the above details. However, prospective purchasers are advised to make their own enquiries.