



32 Erskine Road Winter Valley VIC

4 2 2

Set in a sought-after pocket of Winter Valley, this beautifully designed modern residence delivers the perfect balance of space, comfort and low-maintenance living. Thoughtfully laid out and finished with premium touches throughout, this home is ideal for families, professionals or investors seeking quality and convenience.

The home boasts two generous living zones, providing flexibility for relaxed family living and a separate space to unwind or entertain. Large, light-filled rooms enhance the sense of openness, with natural light flowing effortlessly throughout the home.

At the heart of the property is a stylish, well-appointed kitchen featuring ample bench space, extensive storage and a walk-in pantry, making everyday living and

Price : \$640,000 - \$680,000
Land Size : 401 sqm
View : <https://www.ballaratrealestate.com.au/sale/vic/ballarat-western-district/winter-valley/residential/house/8600765>



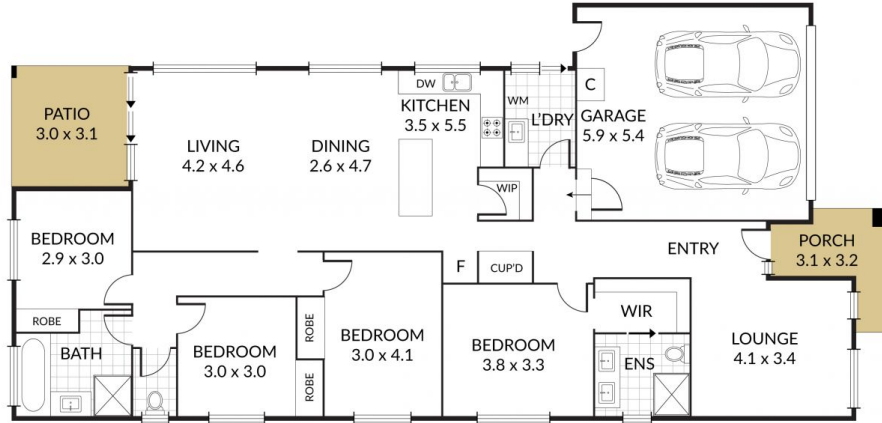
Joshua Donaldson
5331 2233
0488141582

Internal 184m² External 217m² Total 401m²

32 Erskine Road, **Winter Valley**



4 x 2 x 2 x



NOTE: Every precaution has been taken to verify the accuracy of the above details. However, prospective purchasers are advised to make their own enquiries.