



Shed 7/14 Concept Drive Delacombe VIC



ATTENTION: Ballarat Tradies, Business Owners & Investors

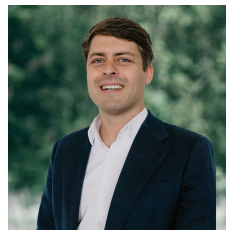
8-metre ceilings. 216m² of usable space. Two high-clearance roller doors. And a rear yard most warehouses can only dream of.

Located at 7/14 Concept Drive, Delacombe.

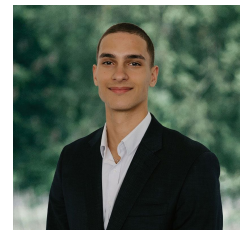
Here's what most industrial sheds get wrong: they're either big enough OR in a good location. Rarely both.

This one? You're 5 minutes from Bunnings. A stone's throw from Delacombe Town Centre. And close enough to Ballarat CBD that clients actually show up.

Building Size : 216 sqm
Land Size : 222 sqm
View : <https://www.ballaratrealestate.com.au/sale/vic/ballarat-western-district/delacombe/commercial/industrial/8586777>



Dominic Morrison
5331 2233
0409 557 461



Mason Bourke
5331 2233
0412 374 633