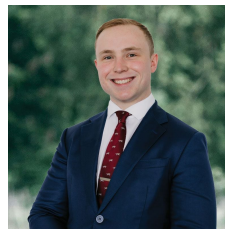




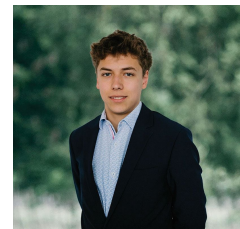
2146 Ballan-Daylesford Road Leonards Hill VIC

Set against the picturesque backdrop of Victoria's renowned Central Highlands, 2146 Ballan-Daylesford Road, Leonards Hill presents an outstanding opportunity to secure a substantial rural landholding of approximately 24.42 hectares (approx. 60 acres) within the Farming community. Offering wide frontage to Ballan-Daylesford Road, this expansive parcel is ideally suited to a range of pursuits (STCA). Enjoy the peace and privacy of a true country setting while remaining conveniently positioned between Daylesford and Ballan, providing easy access to schools, shops, cafés, rail services and major arterial roads to Melbourne. Whether you're looking to expand an existing farming operation, invest in quality rural land, or create a private lifestyle retreat (STCA), this outstanding allotment represents a rare opportunity in a tightly held location. For further ...

Price : \$ 600,000
Land Size : 24.42 ha
View : <https://www.ballaratrealestate.com.au/sale/vic/ballarat-western-district/leonards-hill/residential/land/8586332>



Lachlan Sylvia
 03 53312233
 0458 068 234



Tulley Pelham
 03 5331 2233
 0490 013 121