



10 Charles Drive Cardigan Village VIC

3 2 6

Situated within the serene confines of the sought-after Cardigan Village suburb, rests this well-presented family home, set on a spacious 633m² (approx.) corner block. Located only a short drive to Ballarat, locale schools, shops, and eateries. Commuters will appreciate the seamless access to the Western highway. Presenting a charming front facade, the residence features a spacious garage with potentially for boat, caravan, or other storage or even space for a workspace. The home also having additional backyard access with potential for a carport (STCA), providing more than enough car space. Inside, three well designed bedrooms await, each adorned with built-in robes and the master having an ensuite. The main bathroom being equipped with a shower over bath, vanity, and a toilet. The lounge seamlessly merges with the kitchen and dining area, creating an invit ...

Price : \$510,000 - \$530,000
Land Size : 633 sqm
View : <https://www.ballaratrealstate.com.au/sale/vic/ballarat-western-district/cardigan-village/residential/house/8527829>



Joshua Donaldson
 5331 2233
 0488141582

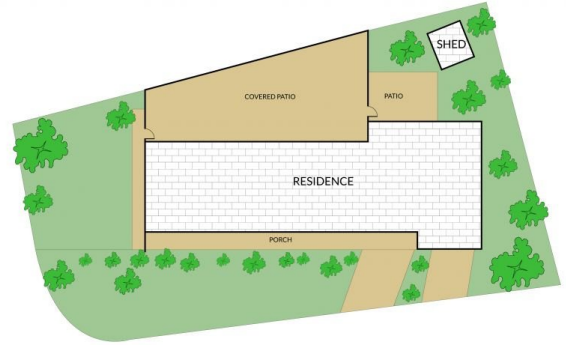
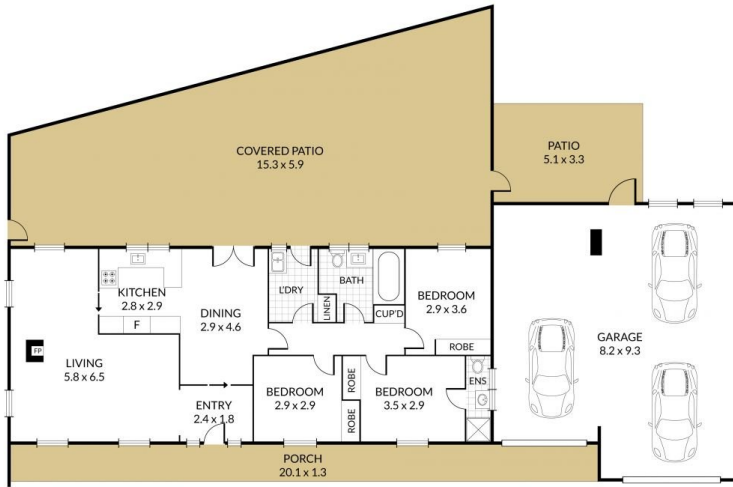
Internal 181m² External 452m² Land Size 633m²

10 Charles Drive, **Cardigan Village**



NORTH

3 x 2 x 6 x



NOTE: Every precaution has been taken to verify the accuracy of the above details. However, prospective purchasers are advised to make their own enquiries.