



16 Elegante Road Winter Valley VIC

5 2 2

Situated in the heart of the sought-after Winter Valley suburb, this charming family home at 16 Elegante Road offers a lifestyle of practicality, convenience, and opportunity.

This home boasting a dynamic and a functional floor plan, featuring four large bedrooms, the master with walk in robes and an expansive ensuite, with the remaining three bedrooms with built in robes. There are three separate living areas that provide versatile spaces for all. One of the living spaces could also be used as a fifth bedroom if your needs require. Whether you envision a cozy theatre room, a dedicated home office, or a children's play area, the layout adapts to your needs.

With central heating and a split system, year-round comfort is guaranteed.

In the heart of the home is the large kitchen, living and

Price : \$ 660,000

Land Size : 700 sqm

View : <https://www.ballaratrealestate.com.au/sale/vic/ballarat-western-district/winter-valley/residential/house/8476565>



Joshua Donaldson
5331 2233
0488141582

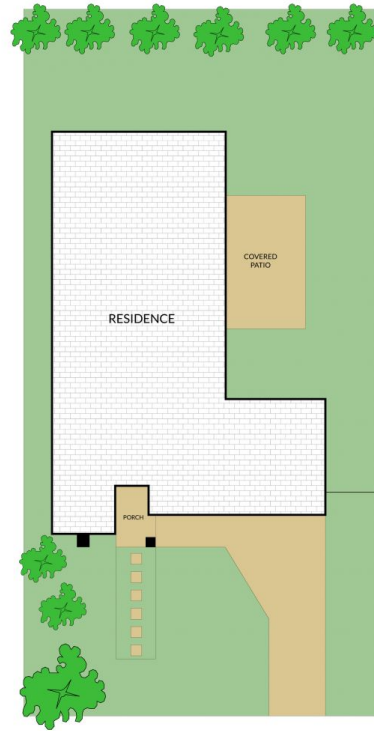
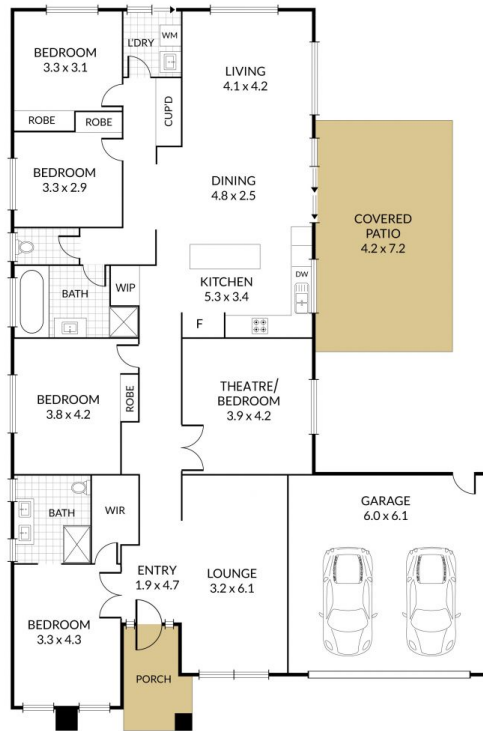
Internal 225m² External 475m² Land Size 700m²

16 Elegante Road, **Winter Valley**



NORTH

5 x 2 x 2 x



NOTE: Every precaution has been taken to verify the accuracy of the above details. However, prospective purchasers are advised to make their own enquiries.