



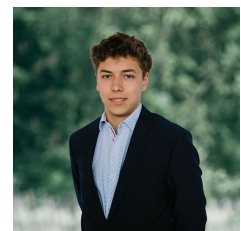
## 1 Gregory Street Beaufort VIC

Discover an idyllic lifestyle opportunity at 1 Gregory Street, a remarkable 544m<sup>2</sup> (Approx.) allotment in the heart of the thriving Beaufort township, renowned for its charming cafes and tightly held community, this is more than just a block. This is an opportunity to escape to a life of adventure with world-class hiking, camping, and breathtaking scenery a short drive away at Mount Cole State Forest and the majestic Grampians National Park. This is your chance to create a bespoke country retreat (STCA), perfectly sized for a modern home and garden without the burden of extensive upkeep. Embrace the tranquility of country living while remaining connected to a vibrant community and a life of outdoor exploration. Contact us today for more information.

**Price** : \$ 125,000  
**Land Size** : 563 sqm  
**View** : <https://www.ballaratrealestate.com.au/sale/vic/ballarat-western-district/beaufort/residential/land/8464822>



**Lachlan Sylvia**  
 03 53312233  
 0458 068 234



**Tulley Pelham**  
 03 5331 2233  
 0490 013 121