

**373 Glenelg Highway Smythes Creek VIC**

3 2 2

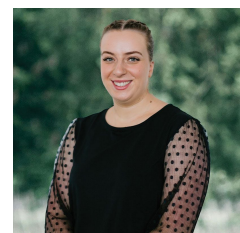
BOOK YOUR INSPECTION ONLINE 24/7 Click "Book an Inspection Time" to select a time that is suitable for you. Alternatively, go to our website [ballaratrealestate.com.au](http://ballaratrealestate.com.au) and press the BOOK INSPECTION button to register for a time that suits you.

**View** : <https://www.ballaratrealestate.com.au/lease/vic/ballarat-western-district/smythes-creek/residential/house/8331430>

Spacious family home situated close to DTC Shopping Centre.  
Stylish three bedroom home located in popular Smythes creek, spacious master bedroom with walk in robe and light filled ensuite with single vanity, shower and toilet, remaining bedrooms are spacious with built in robes. The main hub of the home offers open plan kitchen/dining/living area, with stainless steel appliances including dishwasher, 900mm gas cooktop electric oven with plenty of bench and



**Reynaldo Rilen**  
03 53312233



**Ashleigh Malloch**  
03 5331 2233