



66 Dove Avenue Winter Valley VIC

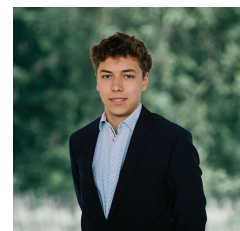
Build your dream home (STCA) in Winter Valley, ideally situated near Ballarat's best amenities. This 488m² (approx) allotment offers a perfect blank canvas for your vision, with fencing already in place on both sides and established homes adjacent. Enjoy the convenience of being located between two shopping centres, close to numerous parks, and the tranquil Conroy's Green parklands. The property is also conveniently near the Delacombe Town Centre and offers easy access to recreational opportunities such as the Ballarat-Skipton Rail Trail and the historic township of Smythesdale. Take a drive by and imagine the possibilities.

SD1803

Price : \$ 240,000
Land Size : 488 sqm
View : <https://www.ballaratrealestate.com.au/sale/vic/ballarat-western-district/winter-valley/residential/land/8255721>



Lachlan Sylvia
03 53312233
0458 068 234



Tulley Pelham
03 5331 2233
0490 013 121