

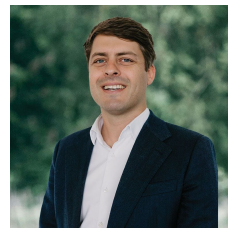


212 Smythes Road Delacombe VIC

4 1 8

Located conveniently close to the ever expanding Delacombe Town Centre is this substantial and strategic opportunity on a large corner block of around 2,993m2 (approx.). Land of this size rarely becomes available in such a prominent location with high exposure and obvious benefits with its position at the beginning of Ballarat's Western Growth Area. The brick veneer home has been extremely well maintained and offers a comfortable residence, income stream or even potential to be incorporated into future development (STCA). The mid century home enjoys all its original features with a stylish kitchen and attached meals area as well as a large front lounge. There are four bedrooms that all feature built in robes. A second living or rumpus room opens up to your outdoor entertaining area. The family bathroom features a bath while there is also a separate shower. T ...

Price : \$ 850,000
Land Size : 2993 sqm
View : <https://www.ballaratrealestate.com.au/sale/vic/ballarat-western-district/delacombe/residential/house/8224732>

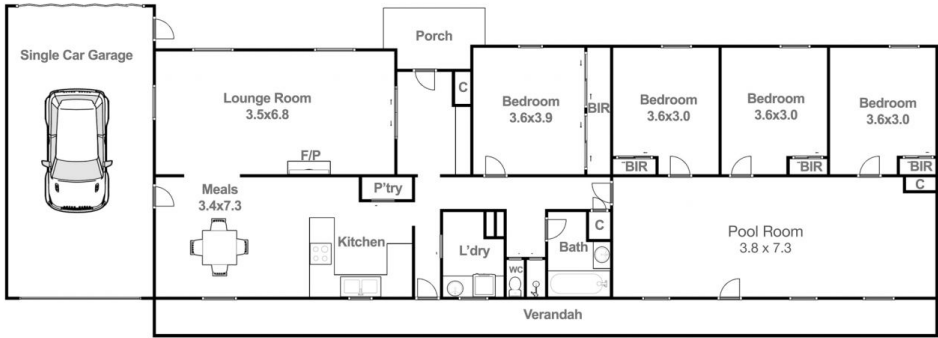


Dominic Morrison
 5331 2233
 0409 557 461



Mason Bourke
 5331 2233
 0412 374 633

212 Smythes Rd **Delacombe**



Dominic Morrison 0409 557 461

This plan is for illustrative purposes only, floor plan proportions and scale are approximate. Plan prepared by PLP Ballarat © 2024 for Ballarat Real Estate.