



204 Neill Street Soldiers Hill VIC

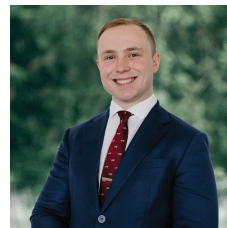
4 1 2

Nestled in the heart of Soldiers Hill, this expansive period home sits on a comfortable 455m² (approx) block of prime real estate. Just moments from the vibrant Ballarat CBD, you'll enjoy immediate access to cafes, shops, restaurants, schools, and the Ballarat Train Station-all right at your doorstep. From first glance, the weatherboard facade and charming front verandah, framed by a well-established garden, set the tone for this timeless home. Stepping inside, you're welcomed by classic features such as high ceilings, ornate cornices, picture rails, timber floors, and large timber trims, offering a glimpse of the character that runs throughout the property. The home boasts four spacious bedrooms, three of which feature fireplaces, all sharing a well-appointed bathroom with a spa bath, shower, and timber vanity. A separate toilet nearby adds extra convenienc ...

Price : \$750,000 - \$820,000

Land Size : 455 sqm

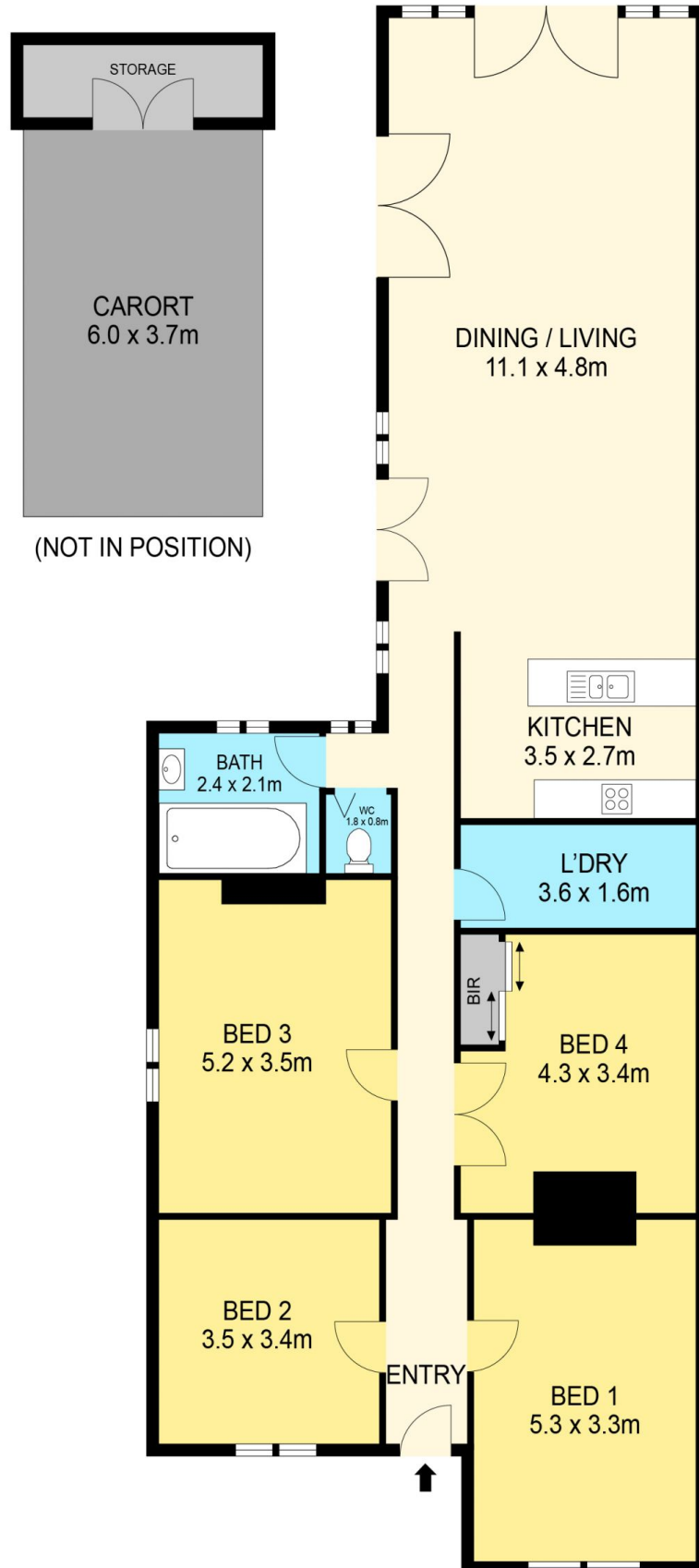
View : <https://www.ballaratrealestate.com.au/sale/vic/ballarat-western-district/soldiers-hill/residential/house/8118804>



Lachlan Sylvia
03 53312233
0458 068 234



Tom Lineker
03 5331 2233
0476 222 418



DISCLAIMER

PLANS SHOWN ARE FOR MARKETING PURPOSES ONLY, ALL DIMENSIONS ARE APPROXIMATE AND NOT TO SCALE. THEY ARE SUBJECT TO ERRORS AND INACCURACIES AND NO LIABILITY WILL BE ACCEPTED. INTERESTED PARTIES SHOULD MAKE THEIR OWN INQUIRIES.

Ballarat
Real Estate

