

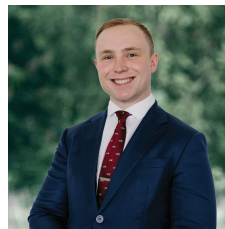


106 Ascot Gardens Drive Delacombe VIC

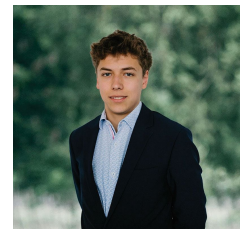
Nestled in the burgeoning Alexandra Estate, this vast 691m² (approx) plot of land presents an ideal canvas for crafting your dream home (STCA). Conveniently positioned within a leisurely stroll of the bustling Delacombe Town Centre, you'll find an array of amenities at your fingertips, from Woolworths, Kmart, and Bunnings to a variety of dining options, entertainment venues, Australia Post services, medical facilities, and childcare centers. Additionally, with primary and secondary schools just a short distance away, this location offers both practicality and convenience for building your future abode. For more information call Lachlan Sylvia today!

TH1908

Price : \$299,000 - \$319,000
Land Size : 691 sqm
View : <https://www.ballaratrealestate.com.au/sale/vic/ballarat-western-district/delacombe/residential/land/8010387>



Lachlan Sylvia
03 53312233
0458 068 234



Tulley Pelham
03 5331 2233
0490 013 121