

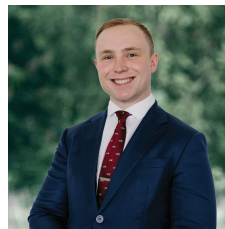


### 108 Ascot Gardens Drive Delacombe VIC

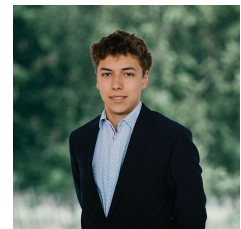
Nestled in the heart of the flourishing Alexandra Estate, this expansive 684m<sup>2</sup> (approx) plot eagerly awaits the creation of your dream home (STCA). Ideally situated just a leisurely stroll away, you'll find yourself in the lively center of Delacombe Town Centre. Here, a plethora of amenities beckon for your enjoyment, ranging from Woolworths and Kmart to Bunnings, complemented by an enticing selection of eateries, gym and entertainment venues. Further enhancing convenience, essential services such as Australia Post, medical facilities, and childcare options are within easy reach. Additionally, both primary and secondary schools are conveniently close by, elevating the allure of this location as the perfect canvas for realizing your future home. For more information call Lachlan Sylvia today!

TH1908

**Price** : \$299,000 - \$319,000  
**Land Size** : 684 sqm  
**View** : <https://www.ballaratrealestate.com.au/sale/vic/ballarat-western-district/delacombe/residential/land/8010386>



**Lachlan Sylvia**  
 03 53312233  
 0458 068 234



**Tulley Pelham**  
 03 5331 2233  
 0490 013 121