



31 Clydesdale Drive Bonshaw VIC

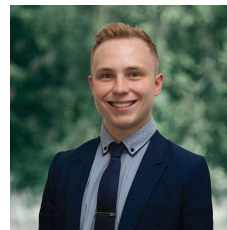
4 2 2

Nestled within the lush expanse of the Ploughmans Arms Estate, this modern residence sprawls across a comfortable 505m² (approx) plot, offering a lifestyle defined by comfort and convenience. Within a leisurely stroll, one can explore esteemed learning centers and park lands, while the bustling Delacombe Town Centre lies in close proximity, granting effortless access to a plethora of amenities. Upon first glance, the property presents a modern brick veneer facade accented with rendered features, complemented by verdant lawns and gardens, ensuring a low-maintenance lifestyle. Comprising four bedrooms in total, the residence features a master suite boasting a walk-in robe and private ensuite equipped with a shower, vanity, and toilet. The remaining three bedrooms, each adorned with built-in robes, share a family bathroom complete with a shower, double vanity, ...

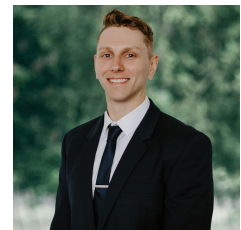
Price : \$500,000 - \$550,000

Land Size : 505 sqm

View : <https://www.ballaratrealestate.com.au/sale/vic/ballarat-western-district/bonshaw/residential/house/8002737>



Lachlan Sylvia
03 53312233
0458 068 234



Chris Just
5331 2233
0438 235 293



DISCLAIMER

PLANS SHOWN ARE FOR MARKETING PURPOSES ONLY, ALL DIMENSIONS ARE APPROXIMATE AND NOT TO SCALE. THEY ARE SUBJECT TO ERRORS AND INACCURACIES AND NO LIABILITY WILL BE ACCEPTED. INTERESTED PARTIES SHOULD MAKE THEIR OWN INQUIRES.

Ballarat
Real Estate

