



**211 Doveton Street South Ballarat Central VIC**

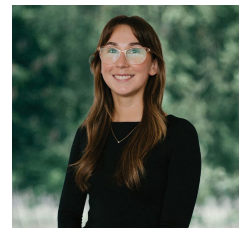
4 2 3

Centrally located in Ballarat, this commercial property is a versatile space suitable for offices, consulting, or allied health practices (STCA). Spanning approximately 500sqm and with a brand new roof its layout is designed for functionality and convenience. With four consulting rooms, this property offers flexibility for various business setups. It also includes a dedicated waiting area for client comfort and convenience. The property boasts amenities such as staff and client bathrooms, along with a kitchenette for added convenience. Split system heating & cooling throughout the premises ensures comfort for all occupants. With a private rear car park offering approximately six dedicated spaces, accessibility is a key feature. Zoned Commercial (C1Z), this property offers flexibility for different business ventures, though any proposed use should be discusse ...

**Price** : \$790,000 - \$840,000  
**Land Size** : 500 sqm  
**View** : <https://www.ballaratrealestate.com.au/sale/vic/ballarat-western-district/ballarat-central/residential/house/7999793>



**David Morrison**  
03 53312233  
0438 342 227



**Chelsea Skewes**  
5331 2233  
0448913072



Approx House Area 100m<sup>2</sup>

Approx Land Area 523m<sup>2</sup>

Whilst [bwrn.com.au](http://bwrn.com.au) has made every attempt to ensure the accuracy of the floor plan contained here, measurements are approximate and no responsibility is taken for any error, omission, or mis-statement. This plan is for illustrative purposes only.

**211 Doveton Street South, Ballarat Central**

Ballarat  
Real Estate

