



4 Jasmine Drive Delacombe VIC

4 2 4

Welcome to this charming family home nestled in the heart of Delacombe, offering a perfect blend of convenience, comfort, and contemporary living. Situated in a prime location close to schools and the bustling Delacombe Town Centre, this property presents an ideal opportunity for families seeking a vibrant yet peaceful lifestyle.

This home, positioned on a corner block, boasts the advantage of both front and rear parking, providing ample space for vehicles and enhancing accessibility. The double garage, conveniently located at Janet Court, offers seamless access to the property, complemented by side access for added convenience.

Accommodating families of all sizes, this home features four spacious bedrooms, providing ample space and

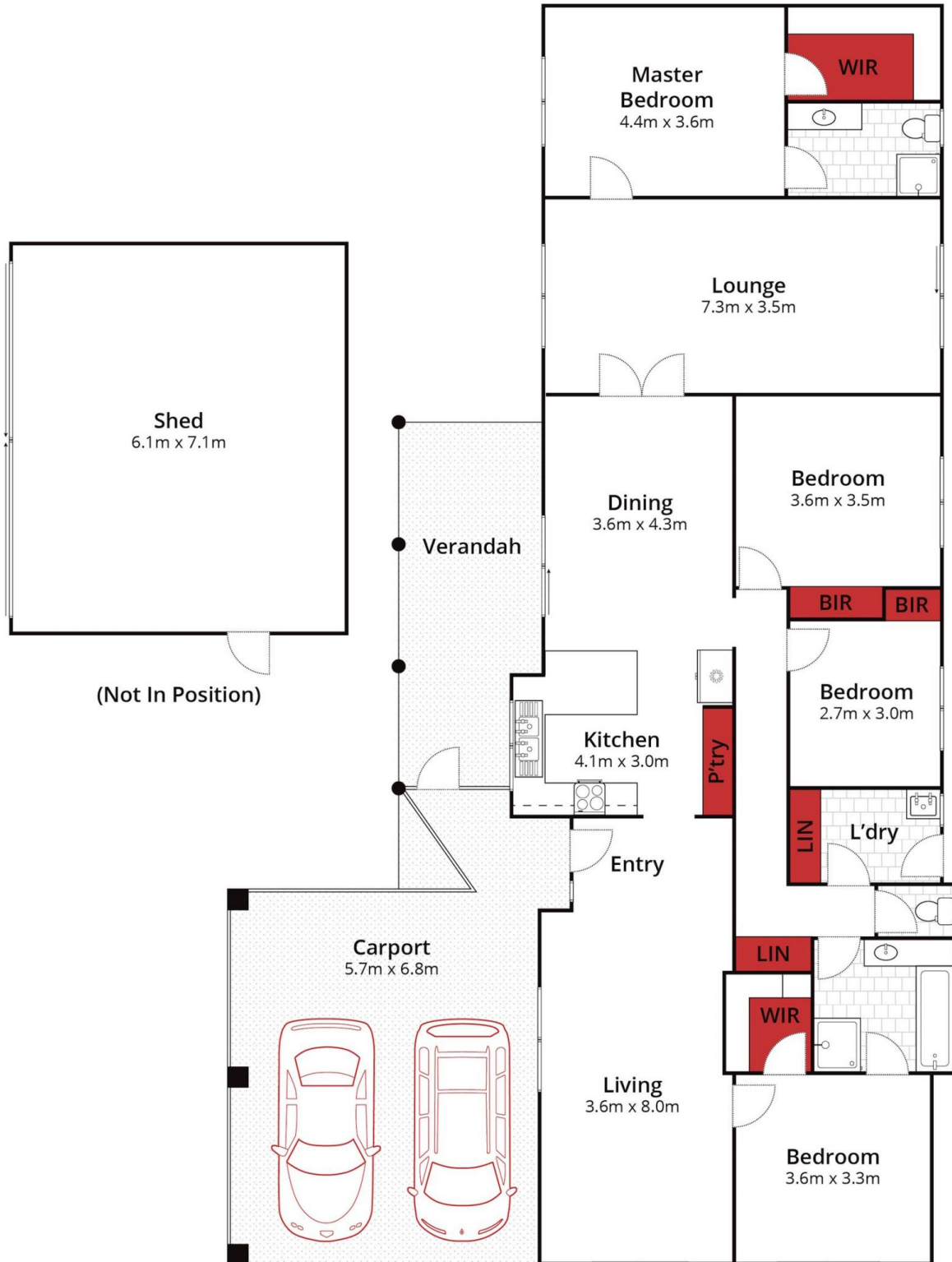
Price : \$545,000 - \$570,000

Land Size : 718 sqm

View : <https://www.ballaratrealestate.com.au/sale/vic/ballarat-western-district/delacombe/residential/house/7995517>



Alex Stepnell
03 53312233
0407373507



Approx House Area 171m²

Approx Land Area 716m²



Whilst bwrn.com.au has made every attempt to ensure the accuracy of the floor plan contained here, measurements are approximate and no responsibility is taken for any error, omission, or mis-statement. This plan is for illustrative purposes only.

4 Jasmine Drive, Delacombe

Ballarat
Real Estate

