

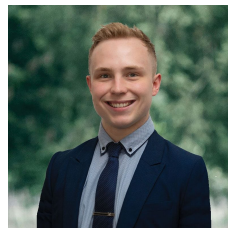


## 527 Clayton Street Canadian VIC

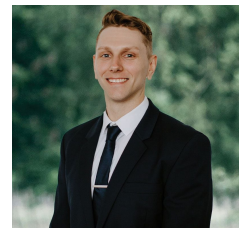
4 1 4

Nestled within the serene, tree-lined expanse of a Canadian neighborhood, this family abode sprawls across an impressive 1117m<sup>2</sup> (approx) parcel of land. A mere stone's throw from the bustling heart of Ballarat CBD, this residence enjoys close proximity to schools, Ballarat Wildlife Park, and the iconic Sovereign Hill, all set amidst picturesque bushland replete with inviting walking trails, rendering it an idyllic sanctuary to call home. From the outside, the home exudes classic charm with its brick veneer facade and a horseshoe driveway enveloped by lush lawns and meticulously tended gardens. Step inside to discover a well-appointed interior boasting four bedrooms, two of which feature built-in robes, while the third boasts a walk in robe. The family bathroom area is equipped with a shower, bath, double vanity, separate WC, while linen cupboard strategicall ...

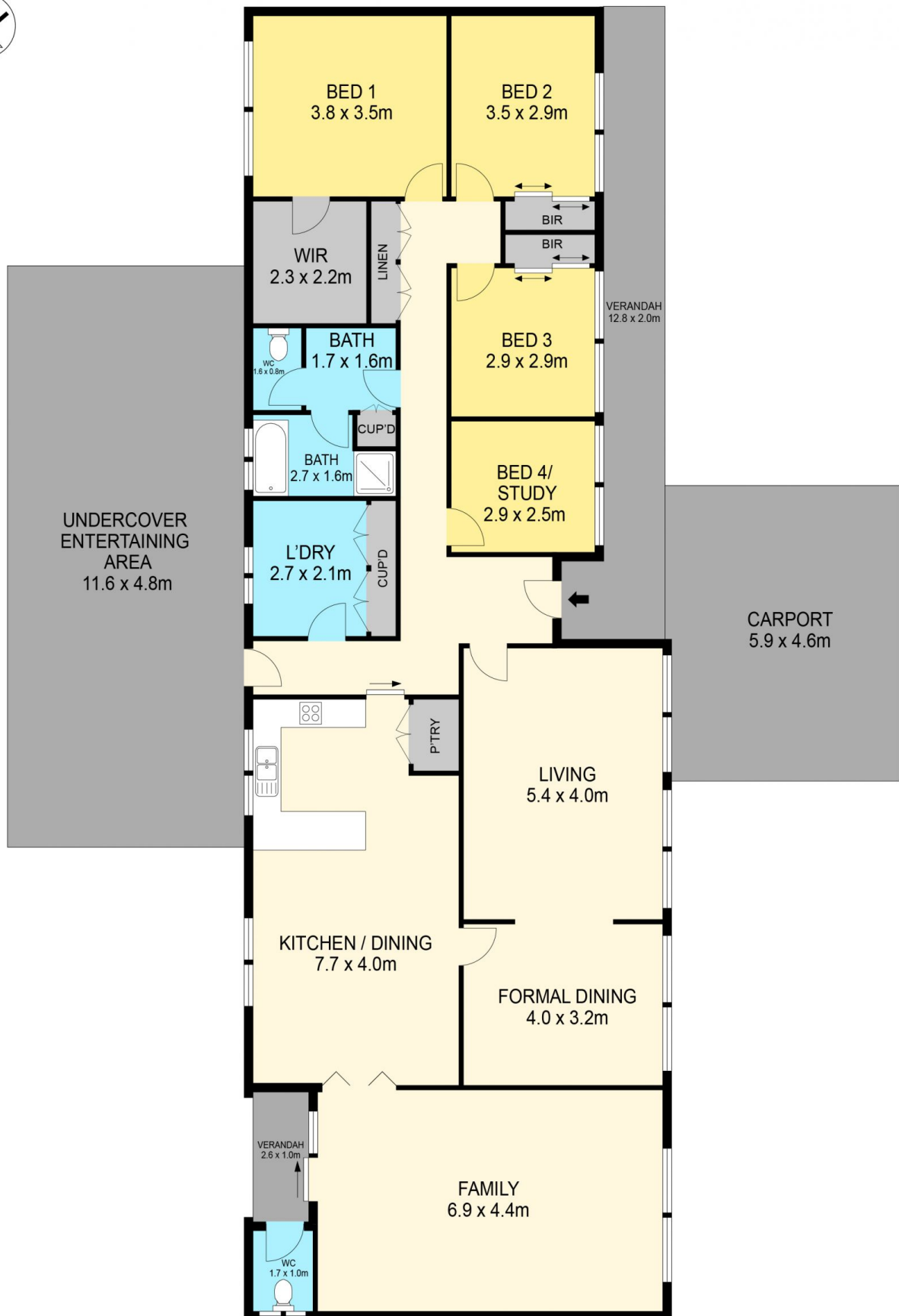
**Price** : \$ 540,000  
**Land Size** : 1117 sqm  
**View** : <https://www.ballaratrealestate.com.au/sale/vic/ballarat-western-district/canadian/residential/house/7989910>



**Lachlan Sylvia**  
03 53312233  
0458 068 234



**Chris Just**  
5331 2233  
0438 235 293



#### DISCLAIMER

PLANS SHOWN ARE FOR MARKETING PURPOSES ONLY. ALL DIMENSIONS ARE APPROXIMATE AND NOT TO SCALE. THEY ARE SUBJECT TO ERRORS AND INACCURACIES AND NO LIABILITY WILL BE ACCEPTED. INTERESTED PARTIES SHOULD MAKE THEIR OWN INQUIRES.

Ballarat  
Real Estate

