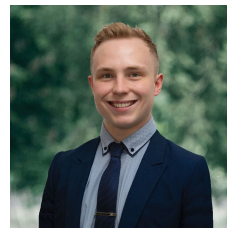


23 Hertford Street Sebastopol VIC

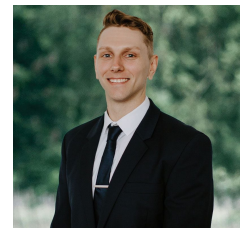
3 2 2

Tucked away in the heart of Sebastopol rests this immaculate, newly constructed family home ready to move into. Conveniently situated within strolling distance of an array of essential amenities, including supermarkets, dining options, medical facilities, and educational institutions spanning from high school to childcare, this locale offers unparalleled convenience. Upon first glance, the home captivates with its modern brick veneer facade adorned with rendered accents, complemented by a double lock-up garage providing ample off-street parking. Framed by freshly laid turf and a low-maintenance garden, the exterior exudes curb appeal. Step inside to discover a thoughtfully designed interior, featuring three bedrooms, all equipped with ceiling fans. The master suite indulges with a walk-in robe and private ensuite, while the remaining bedrooms offer either wa ...

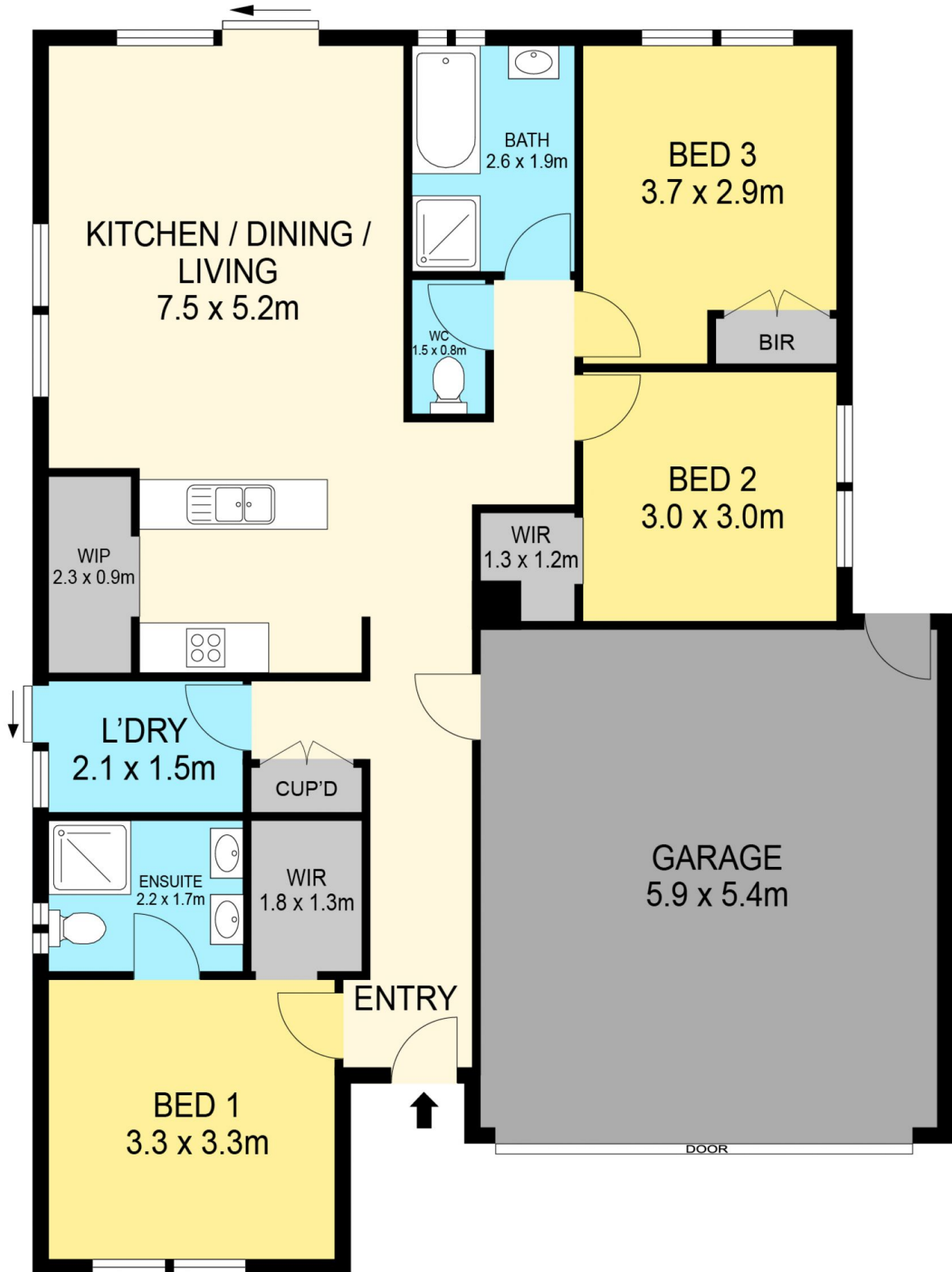
Price : \$479,000 - \$499,000
Land Size : 300 sqm
View : <https://www.ballaratrealestate.com.au/sale/vic/ballarat-western-district/sebastopol/residential/house/7989862>



Lachlan Sylvia
03 53312233
0458 068 234



Chris Just
5331 2233
0438 235 293



DISCLAIMER

PLANS SHOWN ARE FOR MARKETING PURPOSES ONLY, ALL DIMENSIONS ARE APPROXIMATE AND NOT TO SCALE. THEY ARE SUBJECT TO ERRORS AND INACCURACIES AND NO LIABILITY WILL BE ACCEPTED. INTERESTED PARTIES SHOULD MAKE THEIR OWN INQUIRES.

Ballarat
Real Estate

