

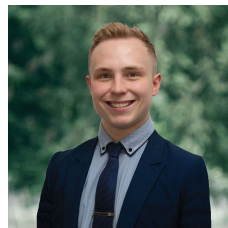


1 Cambridge Street Wendouree VIC

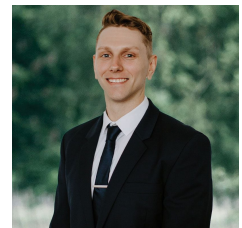
3 1 3

Nestled within the Wendouree community, this family residence occupies an expansive 759m² (approx) plot of land. Conveniently located opposite Pauls Wetland and close to Stockland Wendouree this vibrant locale offers an abundance of amenities including schooling, supermarkets, retail outlets, eateries, medical and sporting facilities. Additionally, with easy access to the Midland HWY and Western Freeway, commuting in and out of town is effortless. Upon first glance, the home captivates with its charming brick veneer facade, complemented by meticulously manicured front lawns and gardens adorned with flowers, roses, and hedges, exuding timeless street appeal. Entering the residence, one is greeted by fresh paint and decorative cornices, providing a hint of the quality that awaits within. The home features three generously sized bedrooms, two of which boast built-in wardrobes and a large living area with a fireplace and a view of the garden.

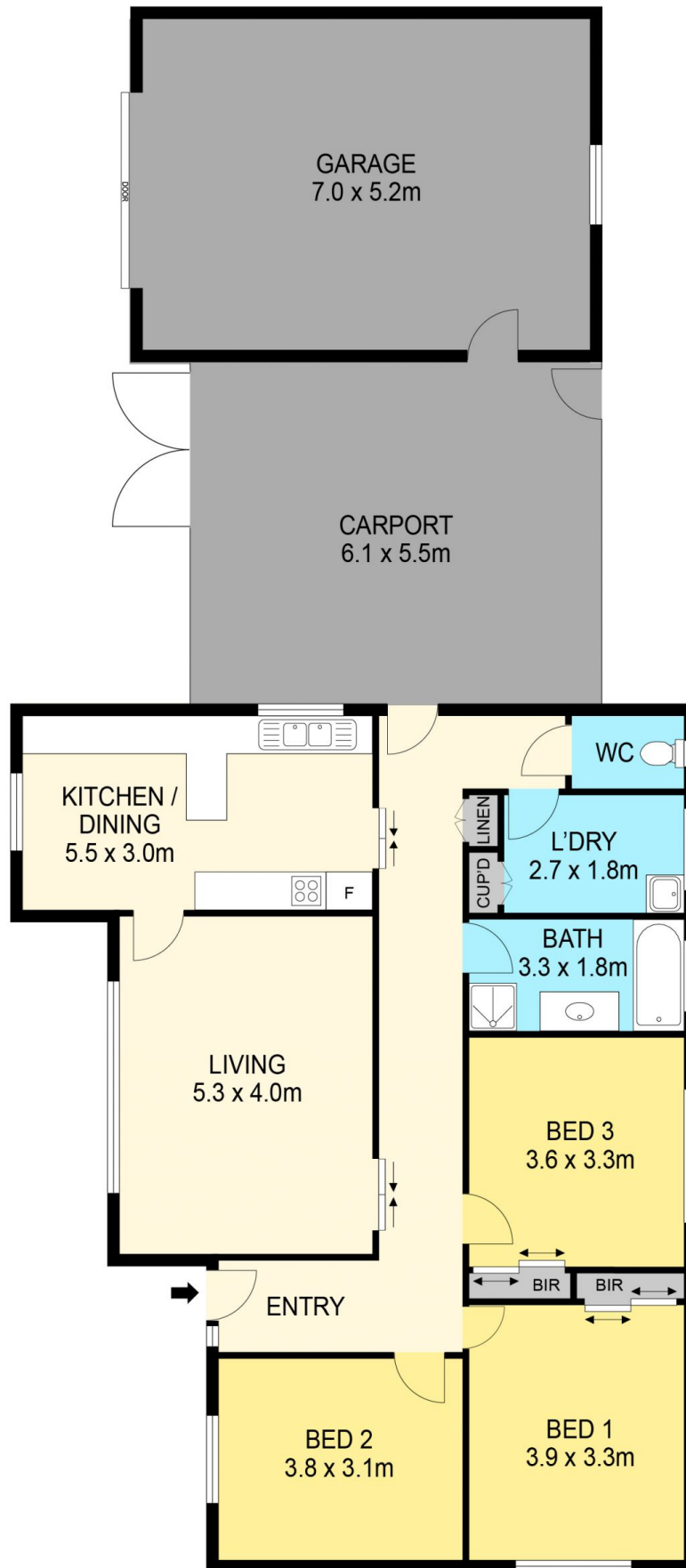
Price : \$445,000 - \$485,000
Land Size : 759 sqm
View : <https://www.ballaratrealestate.com.au/sale/vic/ballarat-western-district/wendouree/residential/house/7982715>



Lachlan Sylvia
03 53312233
0458 068 234



Chris Just
5331 2233
0438 235 293



DISCLAIMER

PLANS SHOWN ARE FOR MARKETING PURPOSES ONLY. ALL DIMENSIONS ARE APPROXIMATE AND NOT TO SCALE. THEY ARE SUBJECT TO ERRORS AND INACCURACIES AND NO LIABILITY WILL BE ACCEPTED. INTERESTED PARTIES SHOULD MAKE THEIR OWN INQUIRES.

Ballarat
Real Estate

