

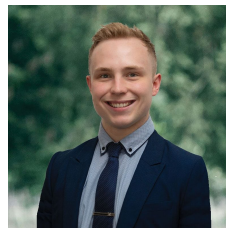


36 Victory Avenue Alfredton VIC

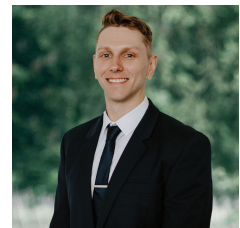
3 1 3

Nestled within the Alfredton community, this family home graces an expansive 778m² (approx) plot of land, offering ample space and comfort for its residents. Positioned within the sought-after Ballarat High School & Alfredton Primary Zone, and with nearby Victoria Park, Lake Wendouree, and all the amenities the Coltman Plaza has to offer, this location provides an ideal setting for a growing family. The home welcomes visitors with a timeless brick veneer facade, surrounded by a variety of flourishing flora and lush lawns, offering a glimpse of the serenity that awaits inside. Comprising three spacious bedrooms, each adorned with built-in robes, the home shares a well-appointed family bathroom featuring a shower, vanity bath, and separate toilet. Multiple living areas seamlessly flow into the kitchen and dining space, creating an inviting atmosphere for gather ...

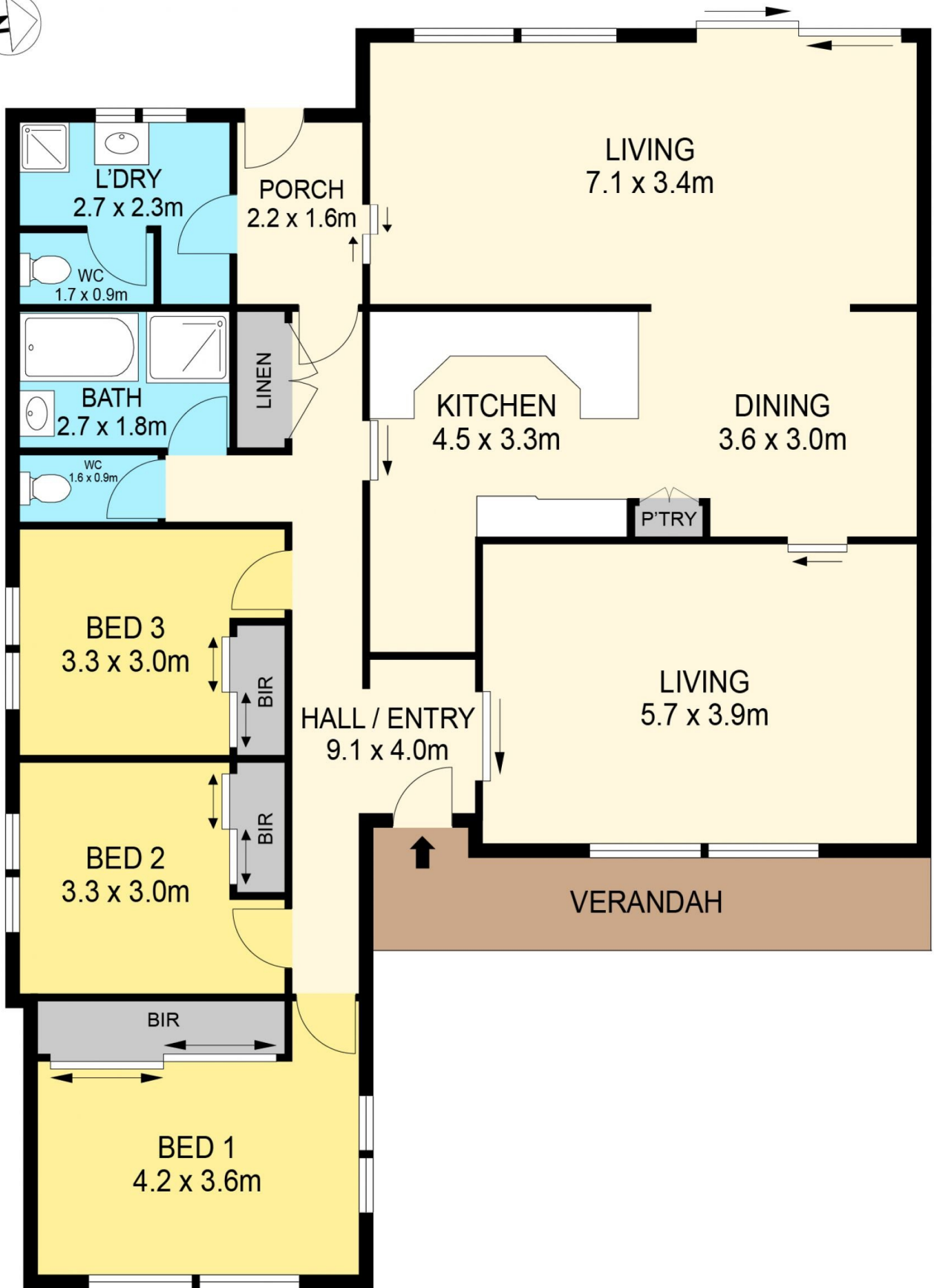
Price : \$495,000 - \$525,000
Land Size : 778 sqm
View : <https://www.ballaratrealestate.com.au/sale/vic/ballarat-western-district/alfredton/residential/house/7982714>



Lachlan Sylvia
 03 53312233
 0458 068 234



Chris Just
 5331 2233
 0438 235 293



DISCLAIMER

PLANS SHOWN ARE FOR MARKETING PURPOSES ONLY. ALL DIMENSIONS ARE APPROXIMATE AND NOT TO SCALE. THEY ARE SUBJECT TO ERRORS AND INACCURACIES AND NO LIABILITY WILL BE ACCEPTED. INTERESTED PARTIES SHOULD MAKE THEIR OWN INQUIRIES.

Ballarat
Real Estate

