



#### 4 Balyarta Street Alfredton VIC

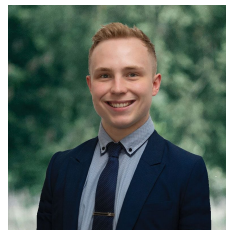
3 2 5

Nestled within the coveted Alfredton community, this spacious family home occupies an expansive 983m<sup>2</sup> (approx) plot of land. Conveniently located in close proximity to Ballarat High School, Alfredton Primary, and St. Thomas More Primary School, with the added benefits of Lucas Town Centre, Lake Wendouree, and Victoria Park, this residence offers an ideal setting for families to thrive. Boasting a charming brick veneer facade, the home greets you with a triple lock-up garage, complete with a workshop, and meticulously manicured front lawns and gardens, all framed by a classic white picket fence. Inside, three generously sized bedrooms await, including a master suite featuring built-in robes and a private ensuite equipped with a vanity, shower, built-in bath, and toilet. The remaining two bedrooms, one with a built-in robe, share a well-appointed family bathro ...

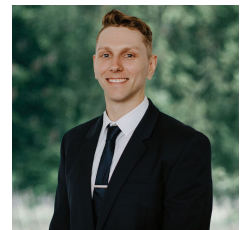
**Price** : \$595,000 - \$625,000

**Land Size** : 983 sqm

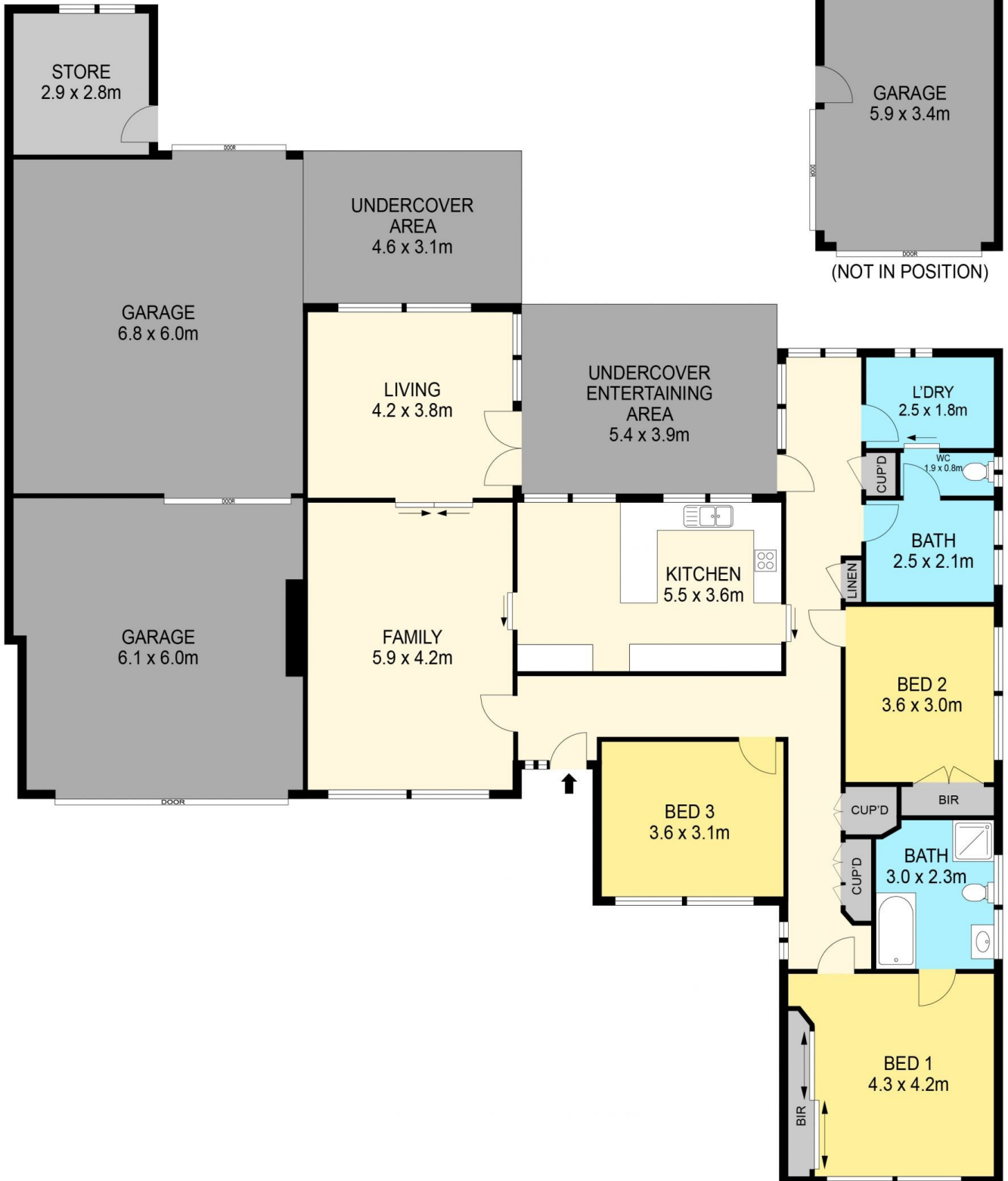
**View** : <https://www.ballaratrealestate.com.au/sale/vic/ballarat-western-district/alfredton/residential/house/7982713>



**Lachlan Sylvia**  
03 53312233  
0458 068 234



**Chris Just**  
5331 2233  
0438 235 293



**DISCLAIMER**

PLANS SHOWN ARE FOR MARKETING PURPOSES ONLY. ALL DIMENSIONS ARE APPROXIMATE AND NOT TO SCALE. THEY ARE SUBJECT TO ERRORS AND INACCURACIES AND NO LIABILITY WILL BE ACCEPTED. INTERESTED PARTIES SHOULD MAKE THEIR OWN INQUIRES.

**Ballarat**  
Real Estate

