

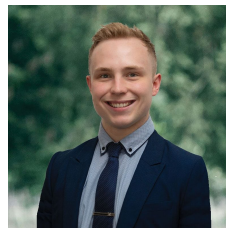


**35 Queen Street Sebastopol VIC**

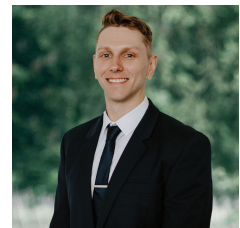
3 1 2

Nestled in the heart of the vibrant Sebastopol community, this brick home sits upon a comfortable 523m2 (approx) parcel of land. Conveniently situated within easy reach of local amenities including shops, schools, the Marty Busch Reserve, and with effortless access to the Midland Highway, this location epitomizes the essence of desirable suburban living. Upon arrival, you're greeted by a brick veneer façade complemented by front gardens and lawns. Inside, the home boasts three well-appointed bedrooms, each sharing the family bathroom, complete with a bath/shower, vanity, toilet, and water trough. The open-plan layout effortlessly merges the living, dining, and kitchen areas, creating a cohesive space perfect for both relaxation and entertaining. The kitchen itself features a gas stove, oven, dishwasher, and ample cupboard space. Stepping outside, you'll dis ...

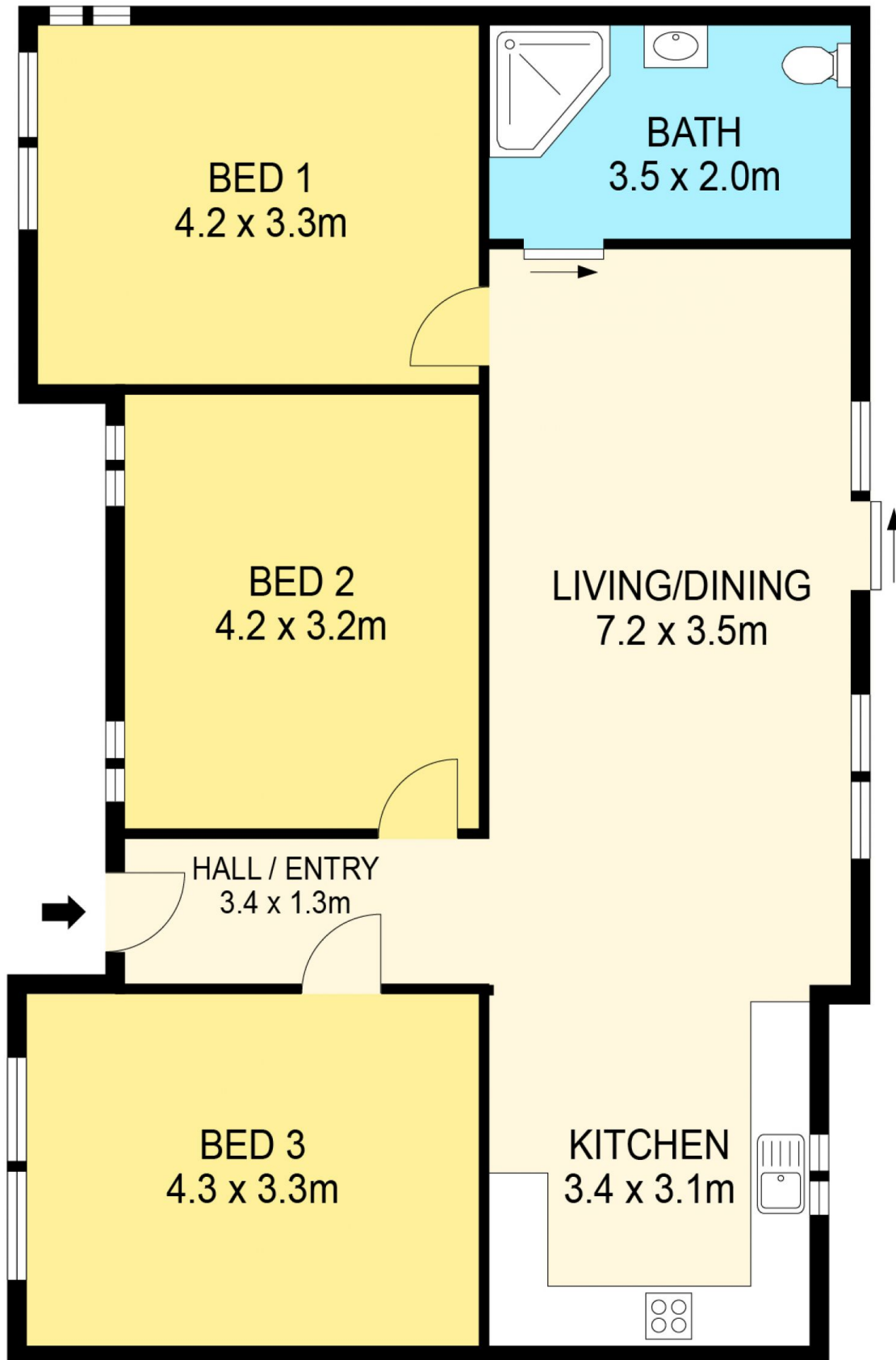
**Price** : \$ 251,000  
**Land Size** : 523 sqm  
**View** : <https://www.ballaratrealestate.com.au/sale/vic/ballarat-western-district/sebastopol/residential/house/7982712>



**Lachlan Sylvia**  
03 53312233  
0458 068 234



**Chris Just**  
5331 2233  
0438 235 293



**DISCLAIMER**

PLANS SHOWN ARE FOR MARKETING PURPOSES ONLY. ALL DIMENSIONS ARE APPROXIMATE AND NOT TO SCALE. THEY ARE SUBJECT TO ERRORS AND INACCURACIES AND NO LIABILITY WILL BE ACCEPTED. INTERESTED PARTIES SHOULD MAKE THEIR OWN INQUIRES.

**Ballarat**  
Real Estate

