

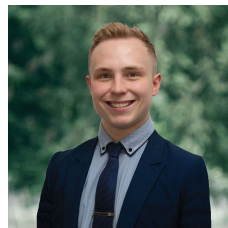


29 Nightingale Street Newington VIC

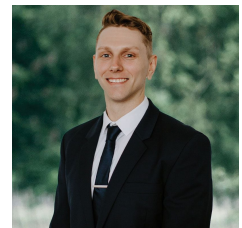
4 2 2

Nestled within the highly sought-after Newington community, this exquisite weatherboard home sits on a spacious 539m² (approx) of prime real estate. Conveniently located just a stone's throw away from prestigious educational institutions such as St. Patrick's College, Loreto College, Ballarat High School and Newington Primary, with Victoria Park and Lake Wendouree just around the corner, this property offers an exceptional opportunity to enjoy the surrounding amenities and cafes, crafting a delightful lifestyle. From its weatherboard facade and inviting front porch to its immaculate gardens adorned with pencil hedges, pencil pines, and vibrant flowers, all enclosed behind a charming white picket fence, this home exudes curb appeal. Step inside to discover a blend of modern comforts and classic charm, featuring soaring ceilings, modern cornices, large

Price : \$1,050,000 - \$1,150,000
Land Size : 539 sqm
View : <https://www.ballaratrealestate.com.au/sale/vic/ballarat-western-district/newington/residential/house/7975551>



Lachlan Sylvia
03 53312233
0458 068 234



Chris Just
5331 2233
0438 235 293



DISCLAIMER

PLANS SHOWN ARE FOR MARKETING PURPOSES ONLY. ALL DIMENSIONS ARE APPROXIMATE AND NOT TO SCALE. THEY ARE SUBJECT TO ERRORS AND INACCURACIES AND NO LIABILITY WILL BE ACCEPTED. INTERESTED PARTIES SHOULD MAKE THEIR OWN INQUIRES.

Ballarat
Real Estate

