

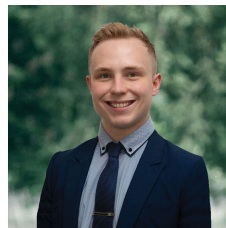


11 Castle Court Ballarat East VIC

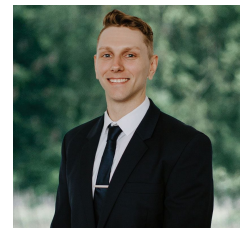
4 2 1

Nestled within the scenic surrounds of Ballarat East, this family abode occupies a generous 619m² (approx) parcel of land. Conveniently situated within strolling distance of Woodman Hills Secondary College and the recently established Ryans IGA, along with essential amenities like pharmacies, cafes, and childcare facilities. Plus, its proximity to the CBD and easy access to the Western Freeway makes commuting a breeze. Upon first glance, the residence exudes a warm welcome with its brick veneer facade, complemented by meticulously maintained front gardens and lawns, alongside a single lock-up garage for convenient off-street parking. Upon entry, you're greeted by four well-appointed bedrooms, with the master suite featuring built-in robes and a private ensuite complete with shower, vanity, and toilet. The remaining three bedrooms, each equipped with built-in ...

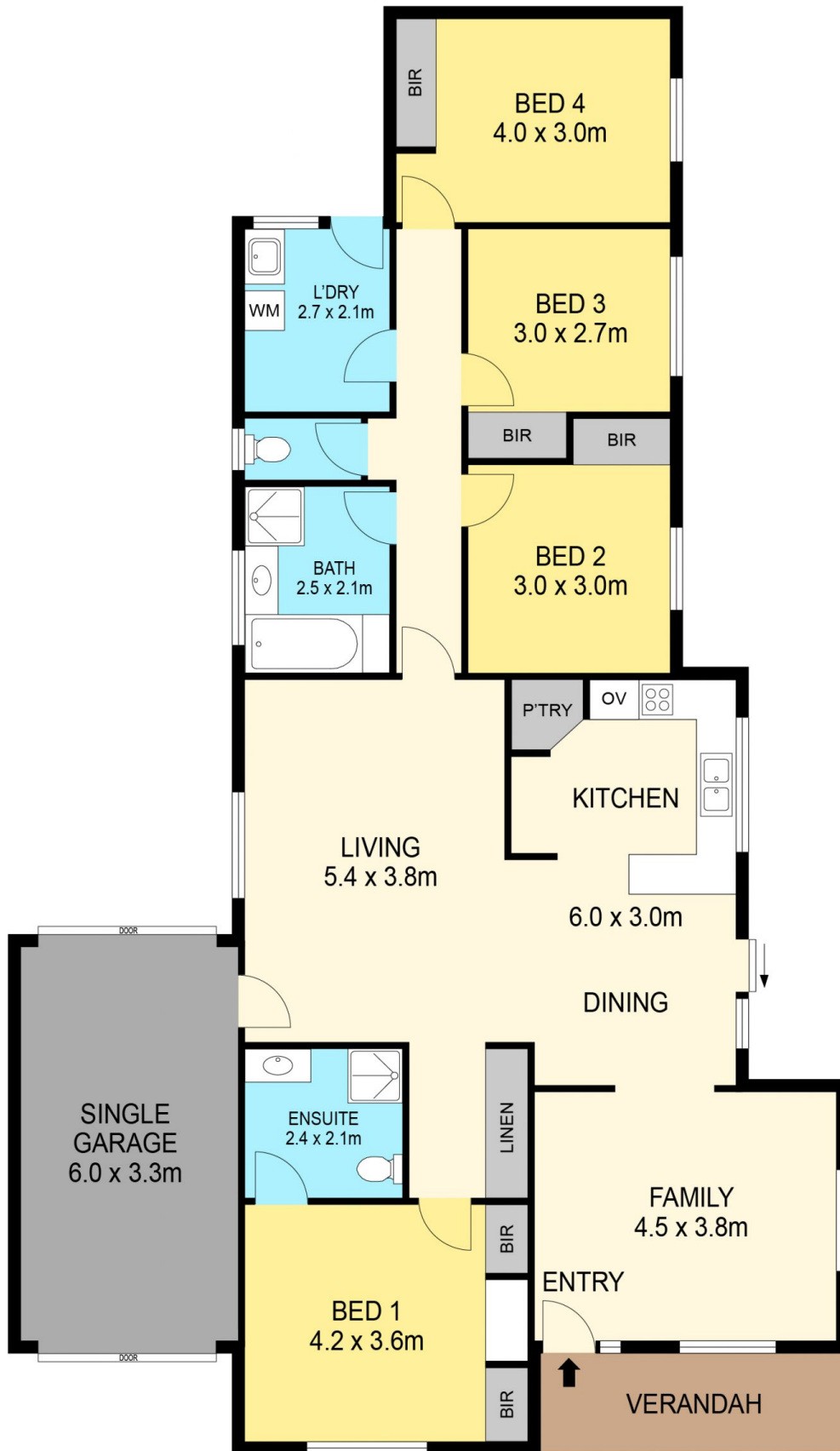
Price : \$485,000 - \$525,000
Land Size : 619 sqm
View : <https://www.ballaratrealestate.com.au/sale/vic/ballarat-western-district/ballarat-east/residential/house/7969662>



Lachlan Sylvia
 03 53312233
 0458 068 234



Chris Just
 5331 2233
 0438 235 293



DISCLAIMER

PLANS SHOWN ARE FOR MARKETING PURPOSES ONLY, ALL DIMENSIONS ARE APPROXIMATE AND NOT TO SCALE. THEY ARE SUBJECT TO ERRORS AND INACCURACIES AND NO LIABILITY WILL BE ACCEPTED. INTERESTED PARTIES SHOULD MAKE THEIR OWN INQUIRES.

Ballarat
Real Estate

