

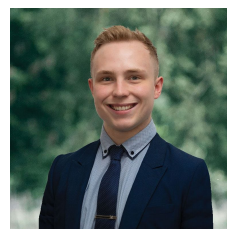


48 Baudinette Drive Sebastopol VIC

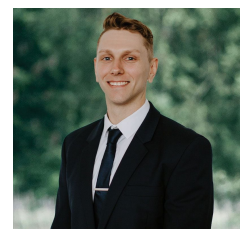
3 2 2

Nestled within the Sebastopol neighborhood lies this modern residence, situated on a comfortable 316m2 (approx) plot of land. Enjoying a wealth of amenities in its vicinity, such as the Delacombe Town Centre (DTC), daycare facilities, primary and secondary schools, numerous supermarkets, and medical services, this home epitomizes convenience at its finest. Upon arrival, you are met with a modern brick veneer facade, complemented by a low-maintenance front yard and a double lock-up garage (DLUG). The interior boasts three bedrooms in total, with the master suite featuring a private ensuite and walk-in robe. The remaining two bedrooms are equipped with built-in robes and share access to a well-appointed family bathroom, complete with a separate toilet nearby. At the heart of the home lies an inviting open-plan living area, seamlessly integrating the kitchen, w ...

Price : \$ 445,000
Land Size : 316 sqm
View : <https://www.ballaratrealestate.com.au/sale/vic/ballarat-western-district/sebastopol/residential/house/7955533>



Lachlan Sylvia
03 53312233
0458 068 234



Chris Just
5331 2233
0438 235 293



DISCLAIMER

PLANS SHOWN ARE FOR MARKETING PURPOSES ONLY, ALL DIMENSIONS ARE APPROXIMATE AND NOT TO SCALE. THEY ARE SUBJECT TO ERRORS AND INACCURACIES AND NO LIABILITY WILL BE ACCEPTED. INTERESTED PARTIES SHOULD MAKE THEIR OWN INQUIRES.

Ballarat
Real Estate

