



7 Ashley Grove Mount Helen VIC

4 2 2

Set in the beautiful surrounds of Mount Helen, this light filled four bedroom and two living area home is a rare opportunity. Just a few minutes from Federation University, Buninyong Village, Mount Clear shops, Damascus College and Emmaus Primary School this meticulously maintained home is set on a generous allotment of approximately 966 sqm.

Cleverly designed to ensure light filters through the home all year round, large, well placed windows allow you to soak in the surrounding garden from every room. The open plan kitchen/dining area provides direct access to the outdoor entertaining area which overlooks the established garden. The formal lounge includes an open fire and split system while the four bedrooms all feature built in robes; the master with ensuite. The formal dining area can be

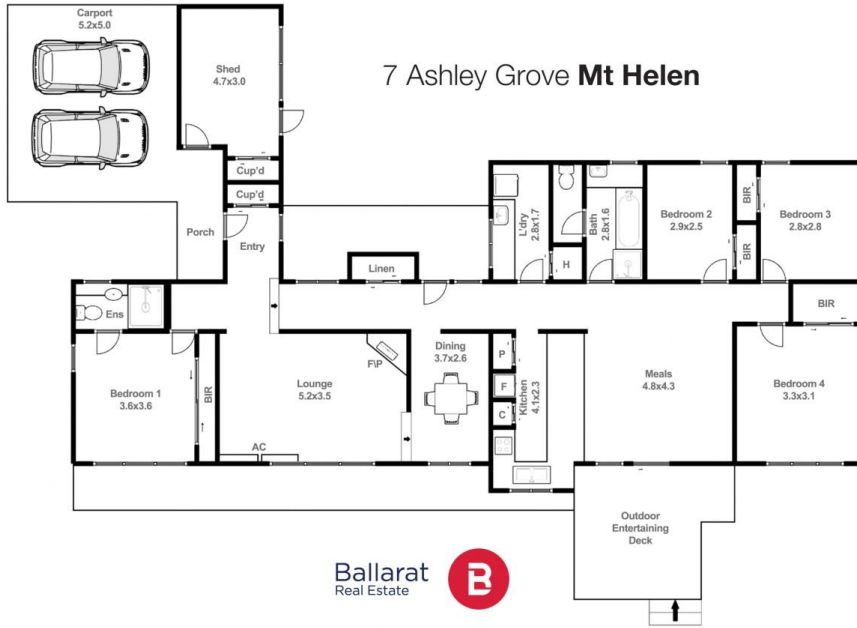
Price : \$630,000 - \$660,000

View : <https://www.ballaratrealestate.com.au/sale/vic/ballarat-western-district/mount-helen/residential/house/7955459>



Richard Gent
5331 2233
0427 536 062

7 Ashley Grove Mt Helen



This plan is for illustrative purposes only, floor plan proportions and scale are approximate. Plan prepared by PLP Ballarat © 2024 for Ballarat Real Estate.