

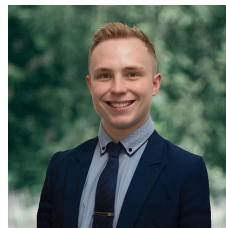


7 Jordy Place Brown Hill VIC

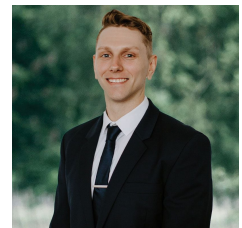
3 1 2

Nestled within the serene confines of a sought-after Brown Hill suburb, rests this exceptional townhouse, gracing a spacious 264m² (approx) plot of land. Convenience reigns supreme in this locale, boasting proximity to Caledonian Primary School and Woodman's Hill Secondary College. Additionally, avid nature enthusiasts will delight in the nearby walking tracks, while everyday essentials are just a short drive away at Bakery Hill Shopping Centre. Commuters will appreciate the seamless access to the Western freeway. Presenting a charming brick veneer facade, the residence features a single lock-up garage with an additional off-street parking spot. Inside, three meticulously designed bedrooms await, each adorned with built-in robes and sharing a well-appointed bathroom equipped with a shower, vanity, and bath, complemented by a separate toilet nearby. The lounge ...

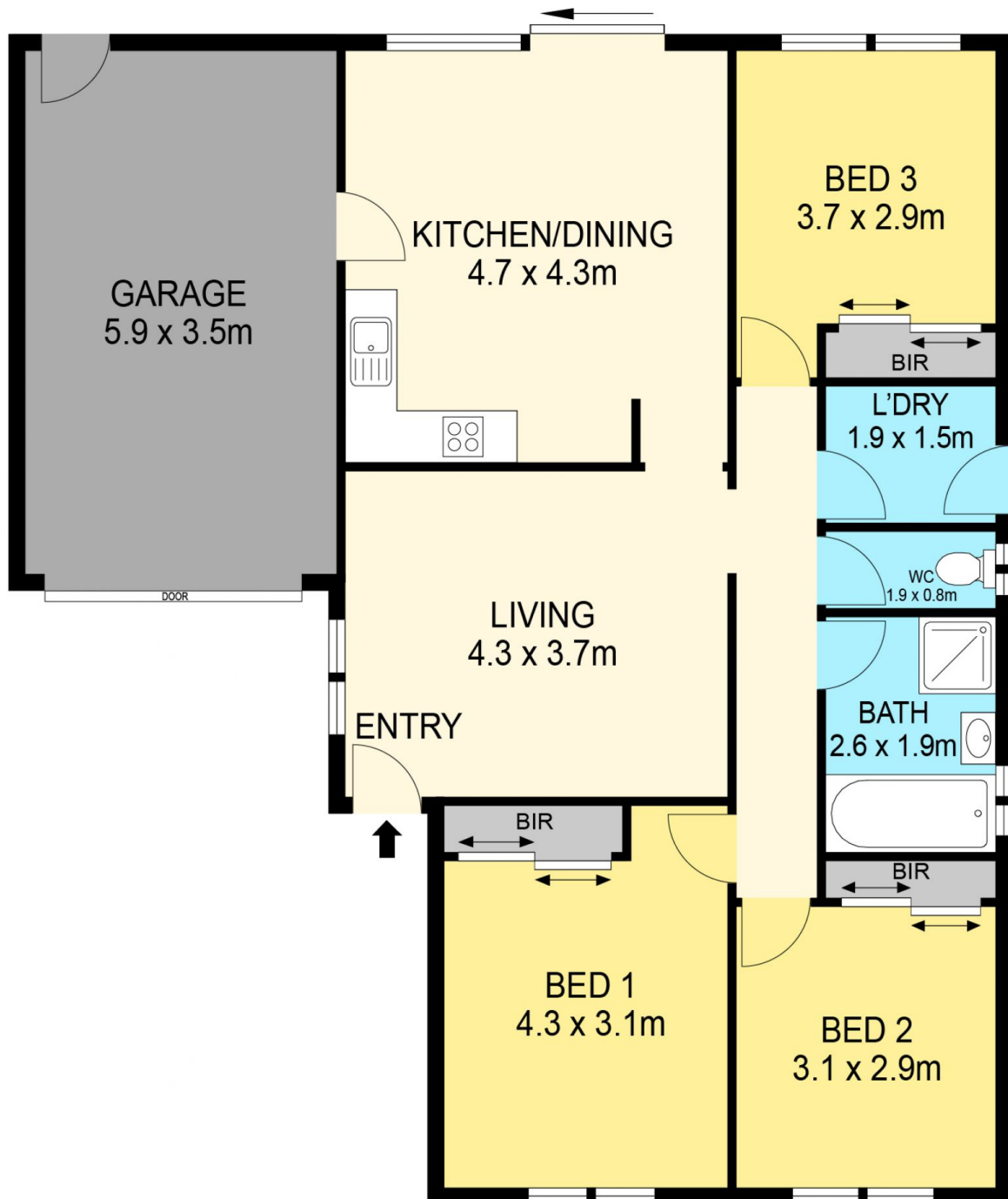
Price : \$390,000 - \$410,000
Land Size : 264 sqm
View : <https://www.ballaratrealestate.com.au/sale/unit/ballarat-western-district/brown-hill/residential/unit/7940577>



Lachlan Sylvia
03 53312233
0458 068 234



Chris Just
5331 2233
0438 235 293



DISCLAIMER

PLANS SHOWN ARE FOR MARKETING PURPOSES ONLY, ALL DIMENSIONS ARE APPROXIMATE AND NOT TO SCALE. THEY ARE SUBJECT TO ERRORS AND INACCURACIES AND NO LIABILITY WILL BE ACCEPTED. INTERESTED PARTIES SHOULD MAKE THEIR OWN INQUIRES.

Ballarat
Real Estate

