



### 15 Masters Drive Winter Valley VIC

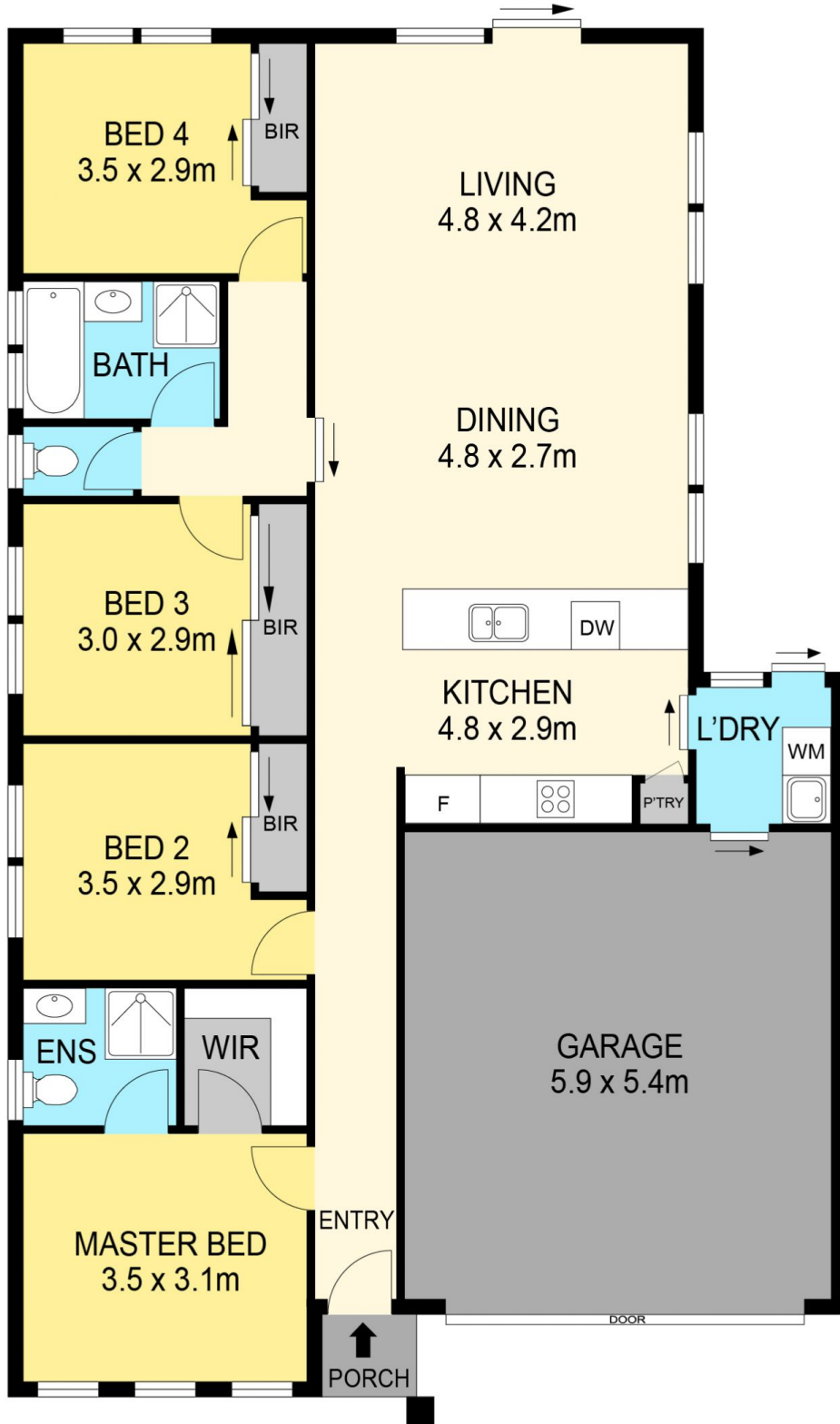
4 2 2

Located just around the corner from Delacombe Town Centre on 578m2 approx. allotment this home offers an abundance of opportunities based on its prime location. Surrounded by local schools, parks, and amenities, there's ample space for the family to flourish both inside and outside the home. Upon arrival, you're greeted by a low-maintenance front yard and a driveway providing internal access from the double garage. The light-filled living space seamlessly flows into the rear yard from the open plan kitchen, equipped with stainless steel appliances. With a low-maintenance garden and a sizable rear-yard, this property offers the perfect space for a growing family. Three generously sized bedrooms boast built-in-robos, while the master bedroom features a walk-in-robe and ensuite. Addition bonus features include, ducted heating, split system cooling and increasin ...

**Price** : \$525,000  
**Land Size** : 580 sqm  
**View** : <https://www.ballaratrealestate.com.au/sale/vic/ballarat-western-district/winter-valley/residential/house/7928888>



**Blaise Newnham**  
03 53312233  
0423175643



**DISCLAIMER**

PLANS SHOWN ARE FOR MARKETING PURPOSES ONLY. ALL DIMENSIONS ARE APPROXIMATE AND NOT TO SCALE. THEY ARE SUBJECT TO ERRORS AND INACCURACIES AND NO LIABILITY WILL BE ACCEPTED. INTERESTED PARTIES SHOULD MAKE THEIR OWN INQUIRIES.

**Ballarat**  
Real Estate

