

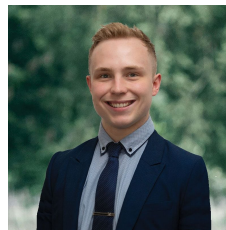


**4/2 Sayle Street Sebastopol VIC**

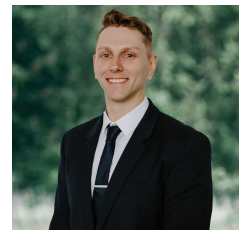
2 1 1

Nestled in the charming locale of Sebastopol, this unit sprawls across a comfortable 226m<sup>2</sup> (approx) expanse of land. Conveniently positioned within walking distance of supermarkets, shops, essential amenities, schools, and public transport, this residence offers the epitome of convenience. Welcoming you with its brick veneer façade and a meticulously manicured front garden adorned with hints of lavender, this home exudes charm and warmth. Inside, discover two bedrooms, each adorned with built-in robes, sharing a well-appointed bathroom featuring a shower, vanity, and built-in bath, with a separate toilet nearby. The heart of the home is its dining and living area, seamlessly integrated with the kitchen, creating an inviting space for gatherings. The kitchen, boasting a gas stove, wall oven and grill, dual sinks, and ample fridge space, overlooks the picture ...

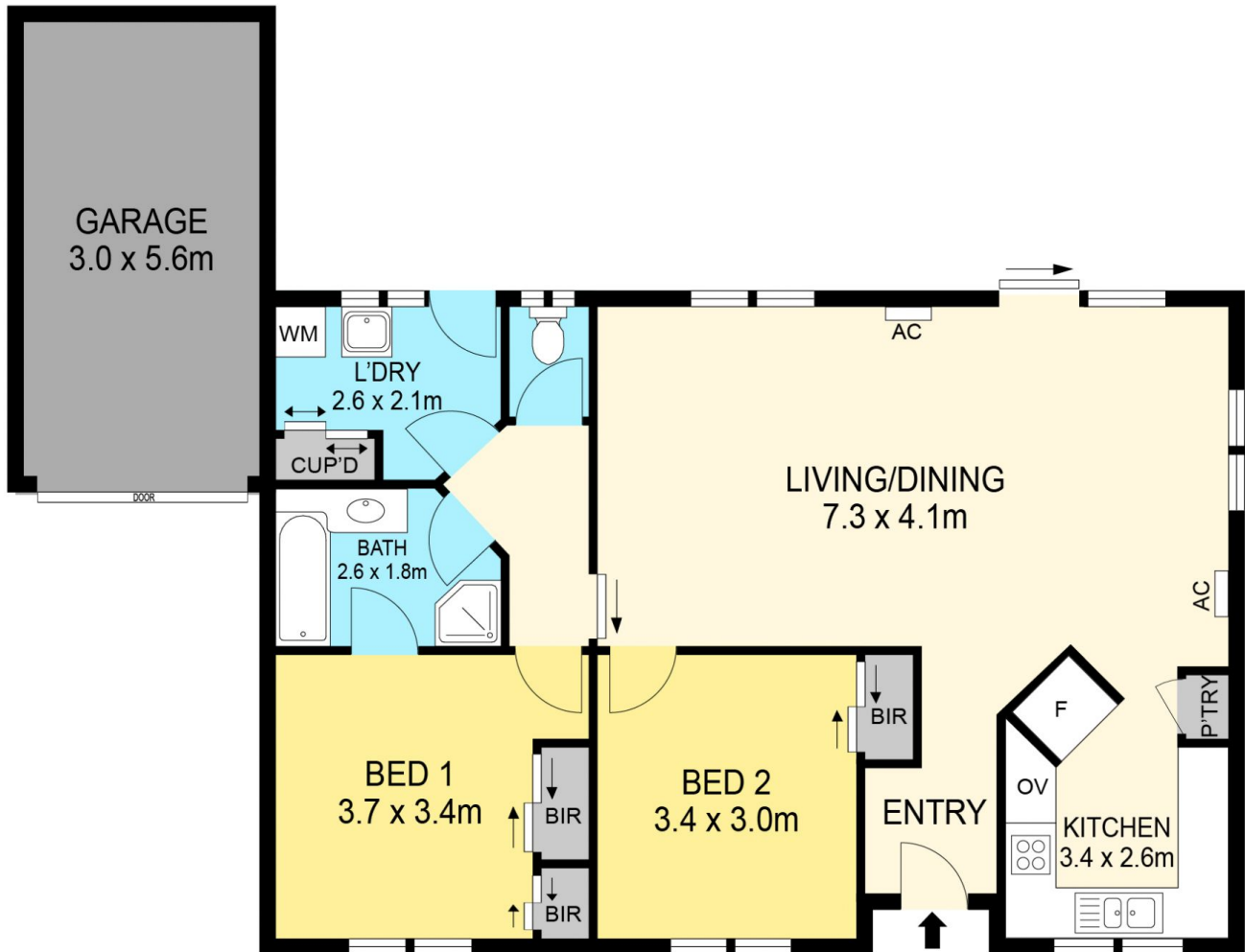
**Price** : \$300,000 - \$330,000  
**Land Size** : 226 sqm  
**View** : <https://www.ballaratrealestate.com.au/sale/vic/ballarat-western-district/sebastopol/residential/unit/7927782>



**Lachlan Sylvia**  
 03 53312233  
 0458 068 234



**Chris Just**  
 5331 2233  
 0438 235 293



**DISCLAIMER**

PLANS SHOWN ARE FOR MARKETING PURPOSES ONLY, ALL DIMENSIONS ARE APPROXIMATE AND NOT TO SCALE. THEY ARE SUBJECT TO ERRORS AND INACCURACIES AND NO LIABILITY WILL BE ACCEPTED. INTERESTED PARTIES SHOULD MAKE THEIR OWN INQUIRIES.

**Ballarat**  
Real Estate

