



390 Greenhalghs Road Winter Valley VIC

4 2 2

Introducing this truly exceptional family home in a prime location, occupying approximately 630m², just a short drive from Delacombe Town Centre. Its strategic placement ensures convenient access to shops and essential amenities, facilitating a comfortable lifestyle for residents. With four well-sized bedrooms, three living spaces, and a spacious open kitchen, this ex-display home is the epitome of an ideal family home. The master bedroom boasts a generous walk-in robe and ensuite with a double vanity, shower, and separate toilet. Adjacent to the entrance, a study or additional bedroom with a built-in robe and desk adds versatility to the home. The open-plan kitchen features a large walk-in pantry, stone benchtops, and gas cooking. The meals area seamlessly connects to the undercover outdoor entertaining area, complete with a ceiling fan and tiled flooring. ...

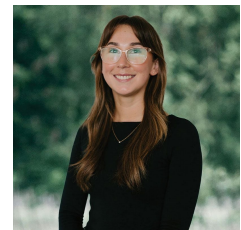
Price : \$ 630,000

Land Size : 630 sqm

View : <https://www.ballaratrealestate.com.au/sale/vic/ballarat-western-district/winter-valley/residential/house/7924635>



David Morrison
03 53312233
0438 342 227



Chelsea Skewes
5331 2233
0448913072



Approx House Area 256m²
 Approx Land Area 629m²



Whilst bwrn.com.au has made every attempt to ensure the accuracy of the floor plan contained here, measurements are approximate and no responsibility is taken for any error, omission, or mis-statement. This plan is for illustrative purposes only.

390 Greenhalghs Road, Delacombe

