



15 Shea Road Newlyn North VIC

3 1 2

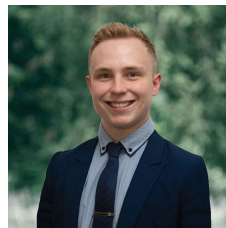
Nestled within the burgeoning Newlyn district, this solid brick residence sits atop an expansive 2423m² (approx) plot of land—a truly unique discovery. Its prime location places it a mere 10-minute drive from Creswick, 15 minutes from Daylesford, 20 minutes from the Western Highway, and just 25 minutes from Ballarat, offering an exceptional opportunity to embrace the quintessential country lifestyle.

? Three generously sized bedrooms, two boasting built-in robes.

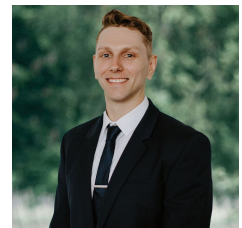
? The inviting living space features a charming combustion stove/oven and flows seamlessly into the dining area, kitchen, and pantry.

? A capacious bathroom awaits, complete with a shower, vanity, and built-in bath, alongside a separate ensuite toilet and vanity.

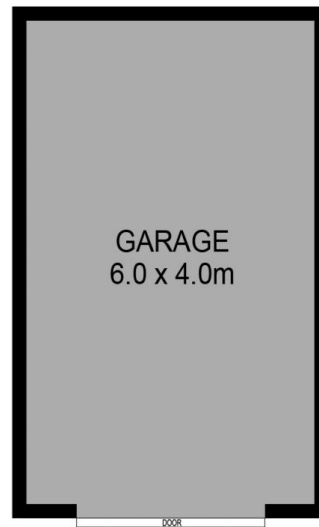
Price : \$570,000 - \$590,000
Land Size : 2423 sqm
View : <https://www.ballaratrealestate.com.au/sale/vic/ballarat-western-district/newlyn-north/residential/house/7924634>



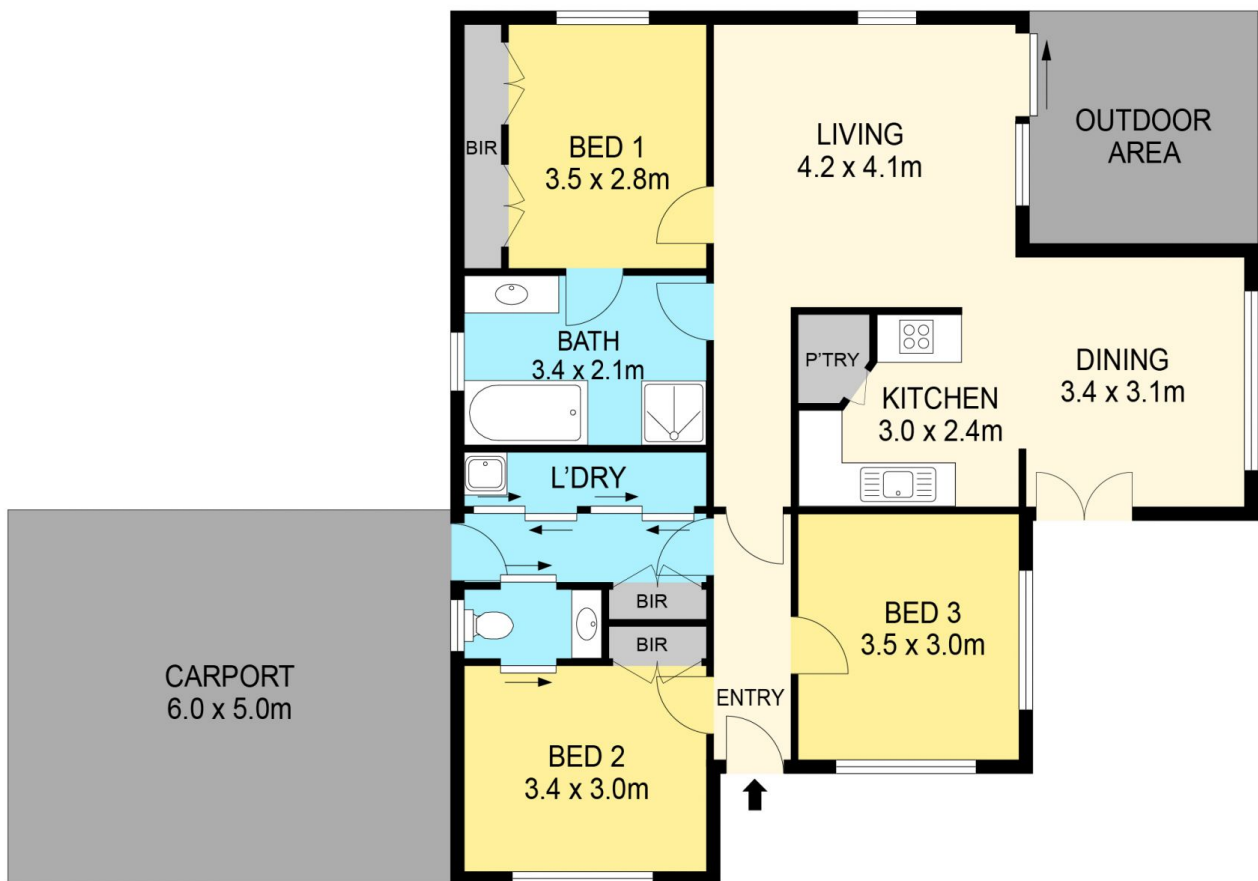
Lachlan Sylvia
03 53312233
0458 068 234



Chris Just
5331 2233
0438 235 293



(NOT IN POSITION)



DISCLAIMER

PLANS SHOWN ARE FOR MARKETING PURPOSES ONLY, ALL DIMENSIONS ARE APPROXIMATE AND NOT TO SCALE. THEY ARE SUBJECT TO ERRORS AND INACCURACIES AND NO LIABILITY WILL BE ACCEPTED. INTERESTED PARTIES SHOULD MAKE THEIR OWN INQUIRES.

Ballarat
Real Estate

