

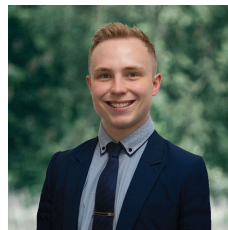


## 27 West End Winter Valley VIC

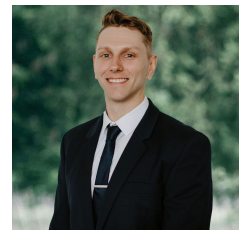
4 2 2

Nestled within the highly sought-after Kensington community, this contemporary residence sits upon a generous 749m<sup>2</sup> (approx) parcel of land. Conveniently positioned near all the amenities of Delacombe Town Centre, including a variety of shops, medical facilities, childcare services, primary and secondary schools, this property offers an ideal setting for a growing family. Upon arrival, this north-facing modern home with brick veneer facade, complemented by well-manicured lawns and a charming front garden overlooking Kensington Creek, extends a warm welcome. The interior features four well-sized bedrooms in total. The master suite, located at the front, is appointed with a ceiling fan, walk-in robe, and ensuite complete with a shower, toilet, and vanity. The remaining three bedrooms offer built-in robes and access to the family bathroom, equipped with a shower ...

**Price** : \$595,000 - \$645,000  
**Land Size** : 749 sqm  
**View** : <https://www.ballaratrealestate.com.au/sale/vic/ballarat-western-district/winter-valley/residential/house/7924561>



**Lachlan Sylvia**  
03 53312233  
0458 068 234



**Chris Just**  
5331 2233  
0438 235 293



#### DISCLAIMER

PLANS SHOWN ARE FOR MARKETING PURPOSES ONLY, ALL DIMENSIONS ARE APPROXIMATE AND NOT TO SCALE. THEY ARE SUBJECT TO ERRORS AND INACCURACIES AND NO LIABILITY WILL BE ACCEPTED. INTERESTED PARTIES SHOULD MAKE THEIR OWN INQUIRES.

Ballarat  
Real Estate

