

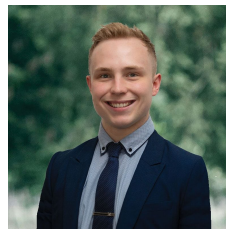


CA 13 Murray's Street Snake Valley VIC

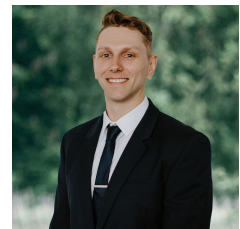
Nestled around 200 meters away from Snake Valley's bustling main street, replete with its charming general store and the quintessential local pub, lies this inviting approximately acre-sized block. Perfectly poised for those envisioning their dream home (STCA), this parcel offers a serene countryside setting. Power infrastructure conveniently awaits just a stone's throw away, while the local primary school is within leisurely walking distance. With Smythesdale a short drive away and Delacombe Town Centre reachable in just over 20 minutes, convenience is at your fingertips. Anticipate high demand for this coveted property. Reach out to Lachlan Sylvia today to secure your slice of tranquility.

TH3004

Price : \$150,000
Land Size : 4047 sqm
View : <https://www.ballaratrealestate.com.au/sale/vic/ballarat-western-district/snake-valley/residential/land/7924560>



Lachlan Sylvia
 03 53312233
 0458 068 234



Chris Just
 5331 2233
 0438 235 293