



103 Careys Road Scarsdale VIC

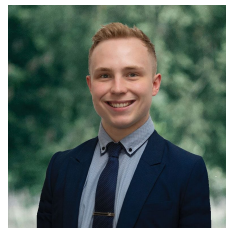
3 1 2

Nestled amidst the serene landscapes of Scarsdale, this captivating home beckons with its idyllic charm, sprawled across approximately 2.506ha of lush terrain. Perfectly positioned close to the township of Smythesdale and Scarsdale, yet mere moments from the vibrant pulse of Delecombe, it offers an unparalleled sanctuary for those seeking tranquil relaxation. Stepping onto the property, you're greeted by a picturesque weatherboard facade, adorned with a quaint front verandah and a bay window framed by trees, roses, and velvety lawns, hinting at the splendor that awaits within. Venturing inside, you're enveloped by the timeless allure of soaring ceilings and rich timber flooring, lending an air of elegance to every corner. The residence boasts three generously appointed bedrooms, each adorned with built-in robes, sharing a luxurious family bathroom featuring ...

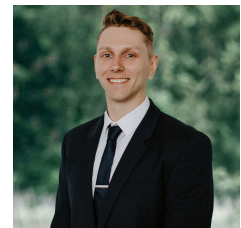
Price : \$700,000 - \$750,000

Land Size : 2.506 ha

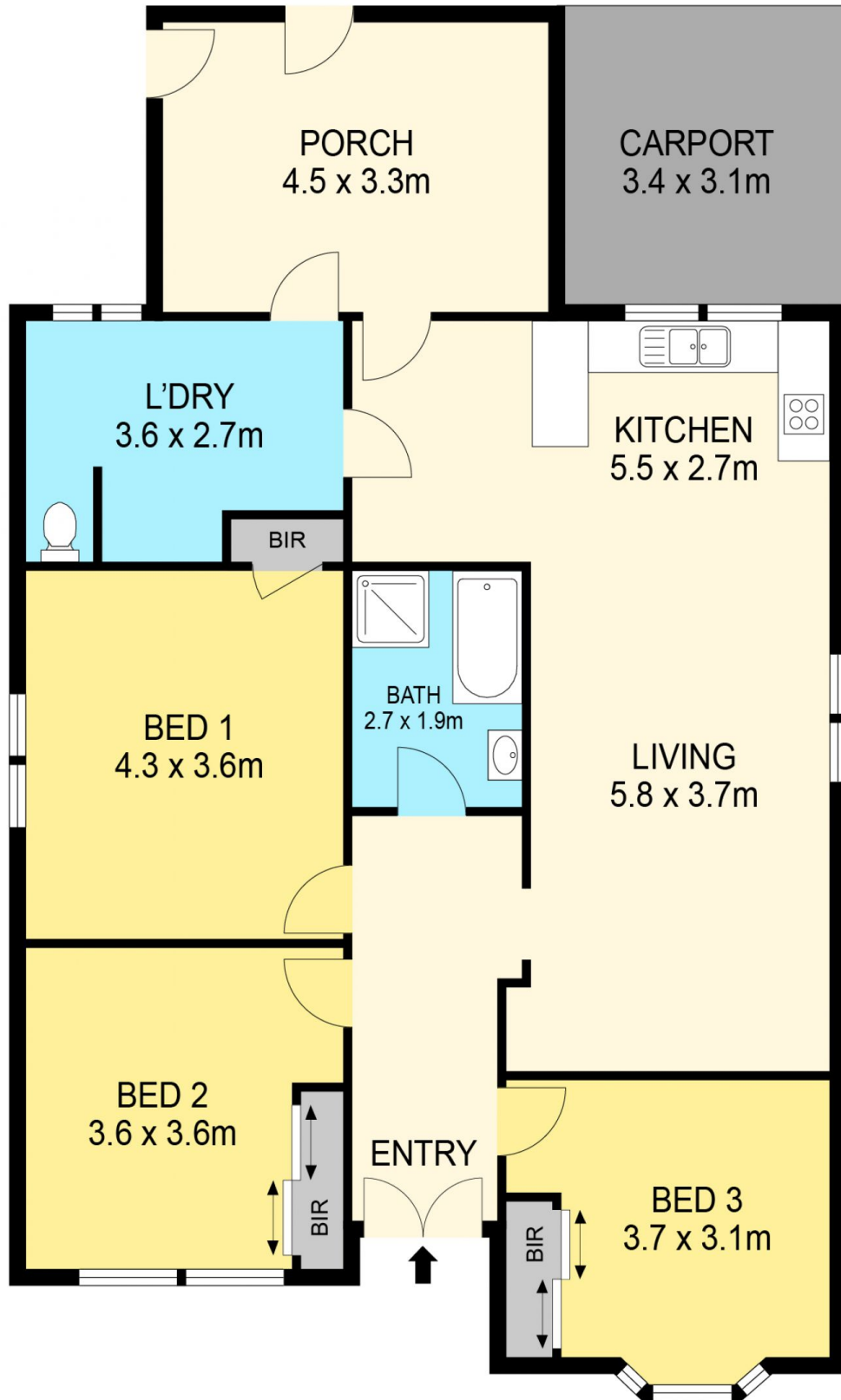
View : <https://www.ballaratrealstate.com.au/sale/vic/ballarat-western-district/scarsdale/residential/house/7919567>



Lachlan Sylvia
03 53312233
0458 068 234



Chris Just
5331 2233
0438 235 293



DISCLAIMER

PLANS SHOWN ARE FOR MARKETING PURPOSES ONLY, ALL DIMENSIONS ARE APPROXIMATE AND NOT TO SCALE. THEY ARE SUBJECT TO ERRORS AND INACCURACIES AND NO LIABILITY WILL BE ACCEPTED. INTERESTED PARTIES SHOULD MAKE THEIR OWN INQUIRES.

Ballarat
Real Estate

