



**29 Salisbury Avenue Newington VIC**

3 1 1

This property, located in the sought-after Newington neighborhood, offers a spacious and comfortable family home on a generous 446m<sup>2</sup> (approx) land.

?Located in one of Ballarat's most enviable locations quietly tucked away off Pleasant Street sits this sturdy brick veneer home. Its prime location provides easy access to prestigious colleges and other educational institutions.

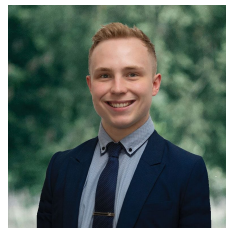
?The proximity to Victoria Park, Lake Wendouree, and the bustling amenities of Ballarat CBD makes it an ideal setting for families, couples and first buyers.

?Approaching the house, you are greeted by a charming brick with a front and back well-maintained gardens. The property includes a single lock-up garage and carport,

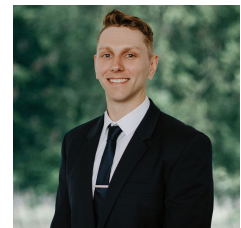
**Price** : \$480,000 - \$520,000

**Land Size** : 446 sqm

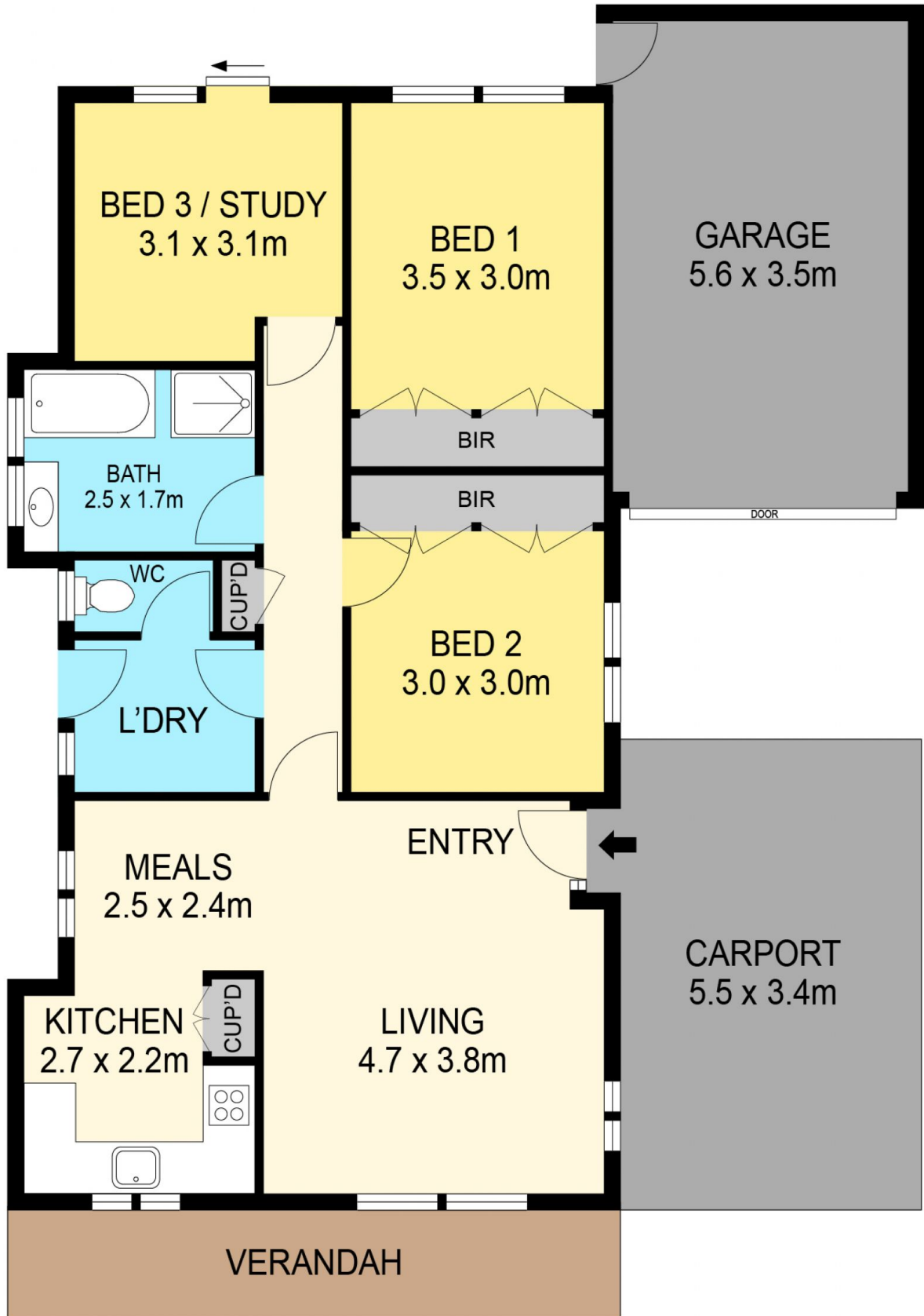
**View** : <https://www.ballaratrealestate.com.au/sale/vic/ballarat-western-district/newington/residential/house/7916490>



**Lachlan Sylvia**  
03 53312233  
0458 068 234



**Chris Just**  
5331 2233  
0438 235 293



**DISCLAIMER**

PLANS SHOWN ARE FOR MARKETING PURPOSES ONLY, ALL DIMENSIONS ARE APPROXIMATE AND NOT TO SCALE. THEY ARE SUBJECT TO ERRORS AND INACCURACIES AND NO LIABILITY WILL BE ACCEPTED. INTERESTED PARTIES SHOULD MAKE THEIR OWN INQUIRES.

**Ballarat**  
Real Estate

