



11 Boulevard Drive Alfredton VIC

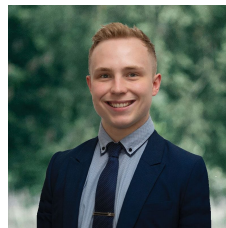
5 2 3

Nestled within the charming locale of Alfredton awaits a sprawling family sanctuary, occupying a generous 945m2 (approx) parcel of land. Embraced by the prestigious Ballarat High School zone and surrounded by esteemed primary schools, this haven is within arm's reach of the vibrant Coltman Plaza in Lucas, ensuring every essential amenity is just moments away. From quaint cafes to bustling eateries, from a well-stocked supermarket to convenient medical facilities, this is the quintessential setting for a flourishing family lifestyle. Elegance greets you at the door, as the red brick veneer facade with triple lock up garage hints at the beauty and grandeur within. Manicured lawns and gardens, adorned with the fragrance of roses, guide your path to the entrance, setting the tone for what lies beyond. Step inside to discover a home designed for comfort and funct ...

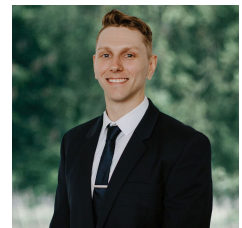
Price : \$695,000 - \$745,000

Land Size : 945 sqm

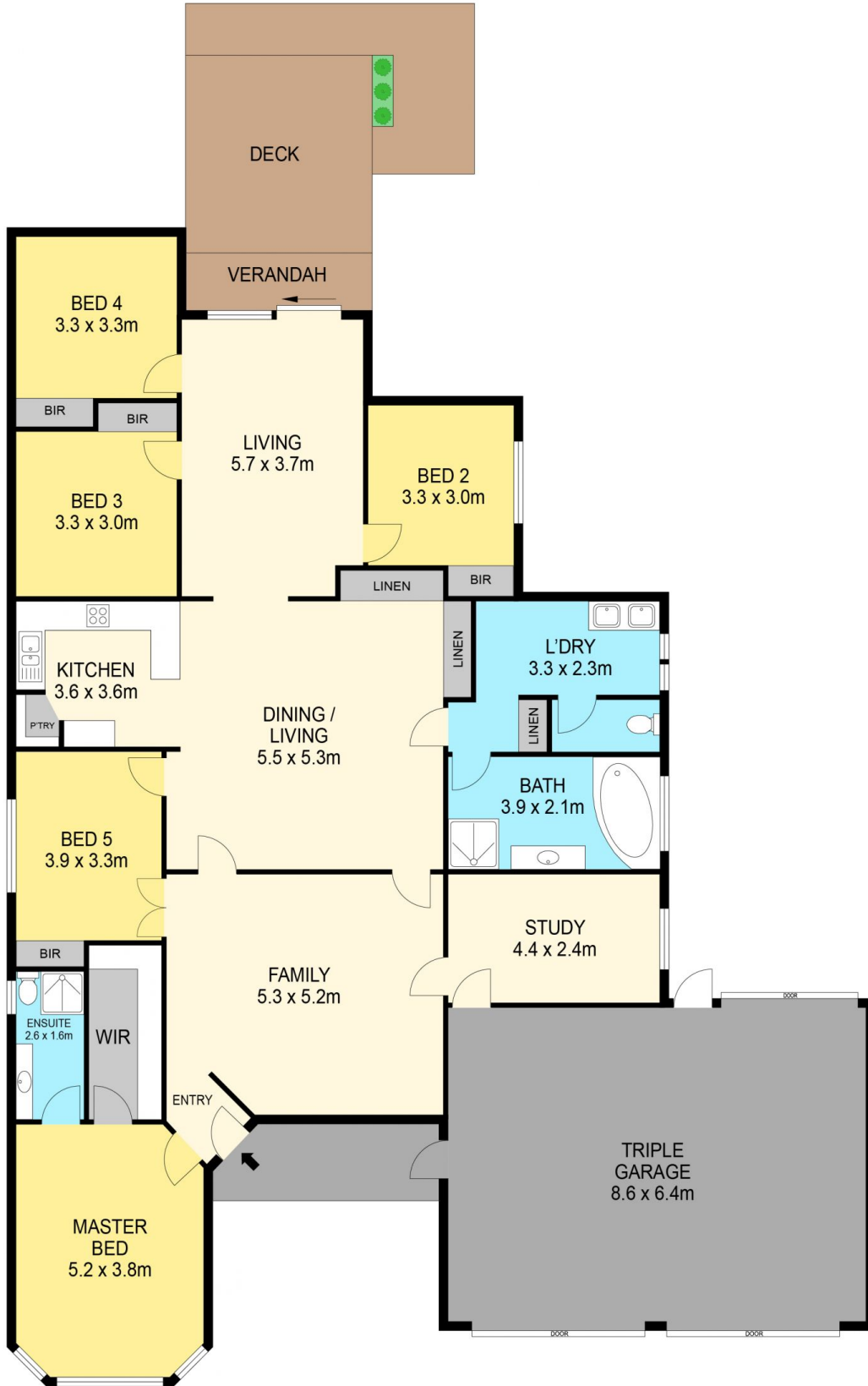
View : <https://www.ballaratrealestate.com.au/sale/vic/ballarat-western-district/alfredton/residential/house/7916312>



Lachlan Sylvia
03 53312233
0458 068 234



Chris Just
5331 2233
0438 235 293



DISCLAIMER

PLANS SHOWN ARE FOR MARKETING PURPOSES ONLY. ALL DIMENSIONS ARE APPROXIMATE AND NOT TO SCALE. THEY ARE SUBJECT TO ERRORS AND INACCURACIES AND NO LIABILITY WILL BE ACCEPTED. INTERESTED PARTIES SHOULD MAKE THEIR OWN INQUIRIES.

Ballarat
Real Estate

