

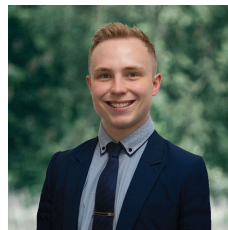


26 Marrubak Way Bonshaw VIC

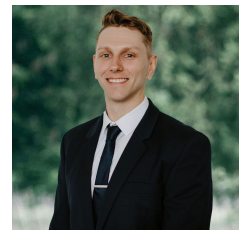
4 2 2

Nestled within the flourishing Ploughmans Arms Estate, this captivating residence sits on an expansive 511m2 (approx) plot, promising a lifestyle of unparalleled comfort and convenience. Within a leisurely stroll, discover an array of esteemed learning centers, while the close proximity to the vibrant Delacombe Town Centre ensures easy access to an abundance of amenities, making this home an enticing haven for a thriving family. As you approach, the modern brick veneer facade beckons, framed by a double lock-up garage and the potential for convenient side access, ideal for a trailer. The front garden with lush lawns with roses guides you to the front door, extending a warm welcome. Inside, the four meticulously designed bedrooms await, each adorned with ceiling fans for optimal comfort. The front master suite boasts a walk-in robe and a private ensuite, feat ...

Price : \$ 545,000
Land Size : 511 sqm
View : <https://www.ballaratrealestate.com.au/sale/vic/ballarat-western-district/bonshaw/residential/house/7907503>



Lachlan Sylvia
03 53312233
0458 068 234



Chris Just
5331 2233
0438 235 293



DISCLAIMER

PLANS SHOWN ARE FOR MARKETING PURPOSES ONLY. ALL DIMENSIONS ARE APPROXIMATE AND NOT TO SCALE. THEY ARE SUBJECT TO ERRORS AND INACCURACIES AND NO LIABILITY WILL BE ACCEPTED. INTERESTED PARTIES SHOULD MAKE THEIR OWN INQUIRIES.

Ballarat
Real Estate

