

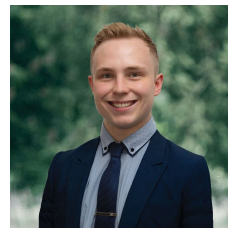


211 Shire Avenue Mount Helen VIC

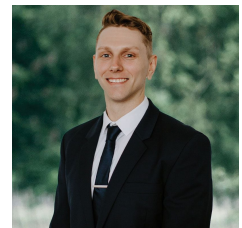
3 1 3

Nestled within the serene community of Mount Helen, this stunning residence sits upon a sprawling 1053m² (approx) expanse of tranquil land, offering an idyllic retreat from the hustle and bustle of everyday life. Strategically positioned near esteemed educational institutions such as Federation University, Mount Clear College, and Damascus Campuses, and with three Primary Schools in close proximity, this home is perfectly situated for families seeking a thriving academic environment. Moreover, the convenience of nearby amenities including supermarkets, cafes, eateries and pharmacies in Buninyong and Mount Clear further enhances the appeal of this location. From its elegant dark brick facade to the lush, well-manicured gardens teeming with native flora, this residence exudes charm and tranquility from the moment you arrive. Step inside to discover a haven of ...

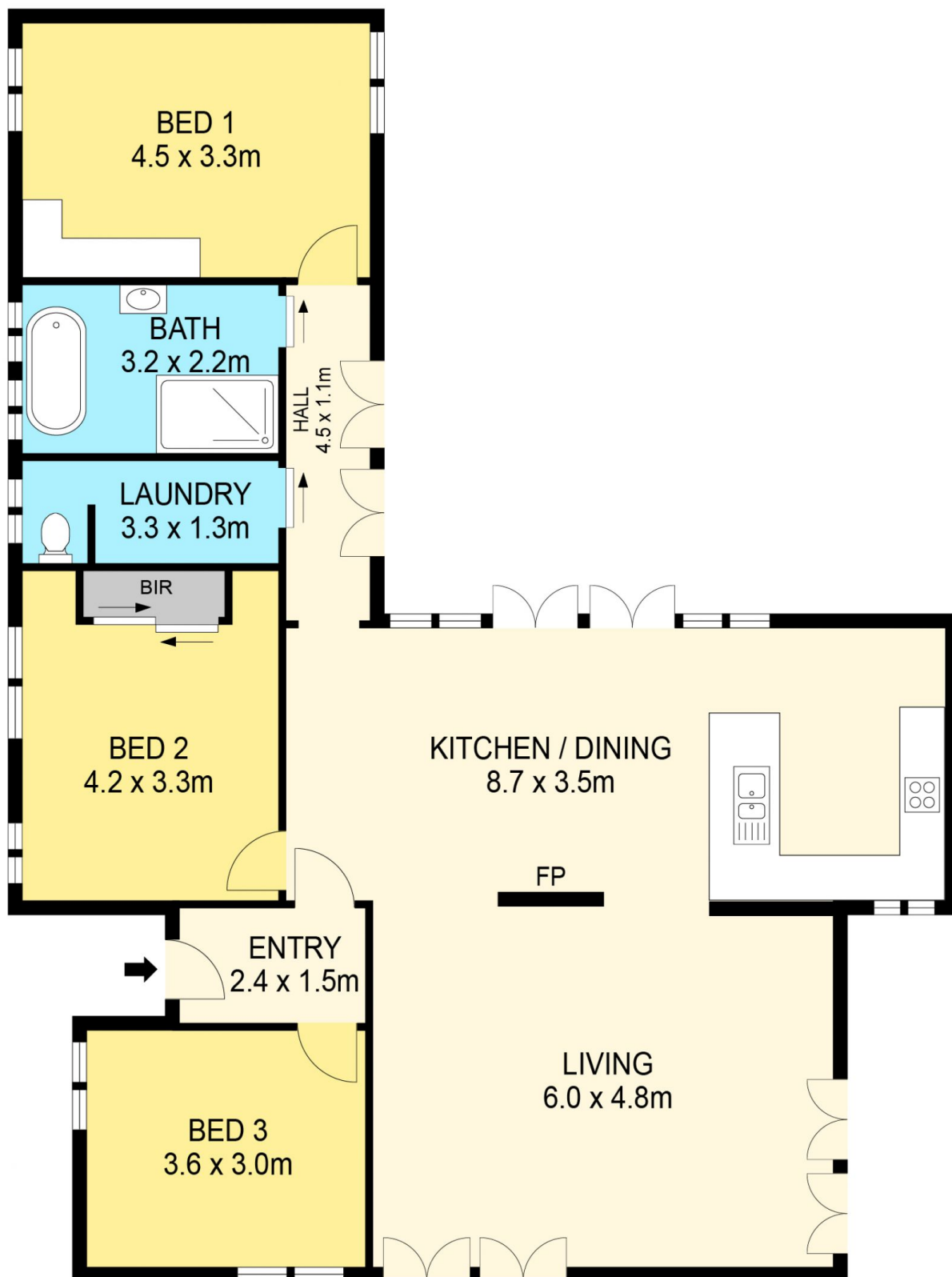
Price : \$ 640,000
Land Size : 1053 sqm
View : <https://www.ballaratrealestate.com.au/sale/vic/ballarat-western-district/mount-helen/residential/house/7907501>



Lachlan Sylvia
03 53312233
0458 068 234



Chris Just
5331 2233
0438 235 293



DISCLAIMER

PLANS SHOWN ARE FOR MARKETING PURPOSES ONLY. ALL DIMENSIONS ARE APPROXIMATE AND NOT TO SCALE. THEY ARE SUBJECT TO ERRORS AND INACCURACIES AND NO LIABILITY WILL BE ACCEPTED. INTERESTED PARTIES SHOULD MAKE THEIR OWN INQUIRIES.

Ballarat
Real Estate

