

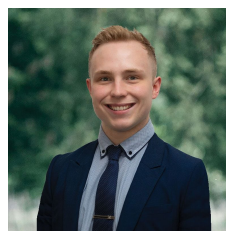


**3/1112 Howitt Street Wendouree VIC**

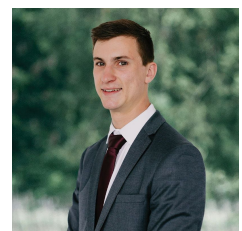
2 1 1

Nestled in the heart of the prestigious Wendouree, discover this impeccably maintained unit set on a comfortable 205m2 (approx) plot. Boasting proximity to Lake Wendouree, Ballarat Grammar, supermarkets, a variety of stores, eateries, medical facilities, and more, this residence is an irresistible haven. A delightful 80's brick veneer facade, complemented by a single lock-up garage and meticulously manicured front lawns, sets the tone for a welcoming ambiance. Step into the front living room, adorned with a split system, creating an inviting space to entertain guests and unwind. Continuing your journey, the kitchen and dining area beckons with an abundance of natural light. The kitchen is a culinary haven equipped with a 900MM gas cooktop, 600MM electric oven, pantry, and ample storage, ensuring a delightful cooking experience. This charming abode comprises ...

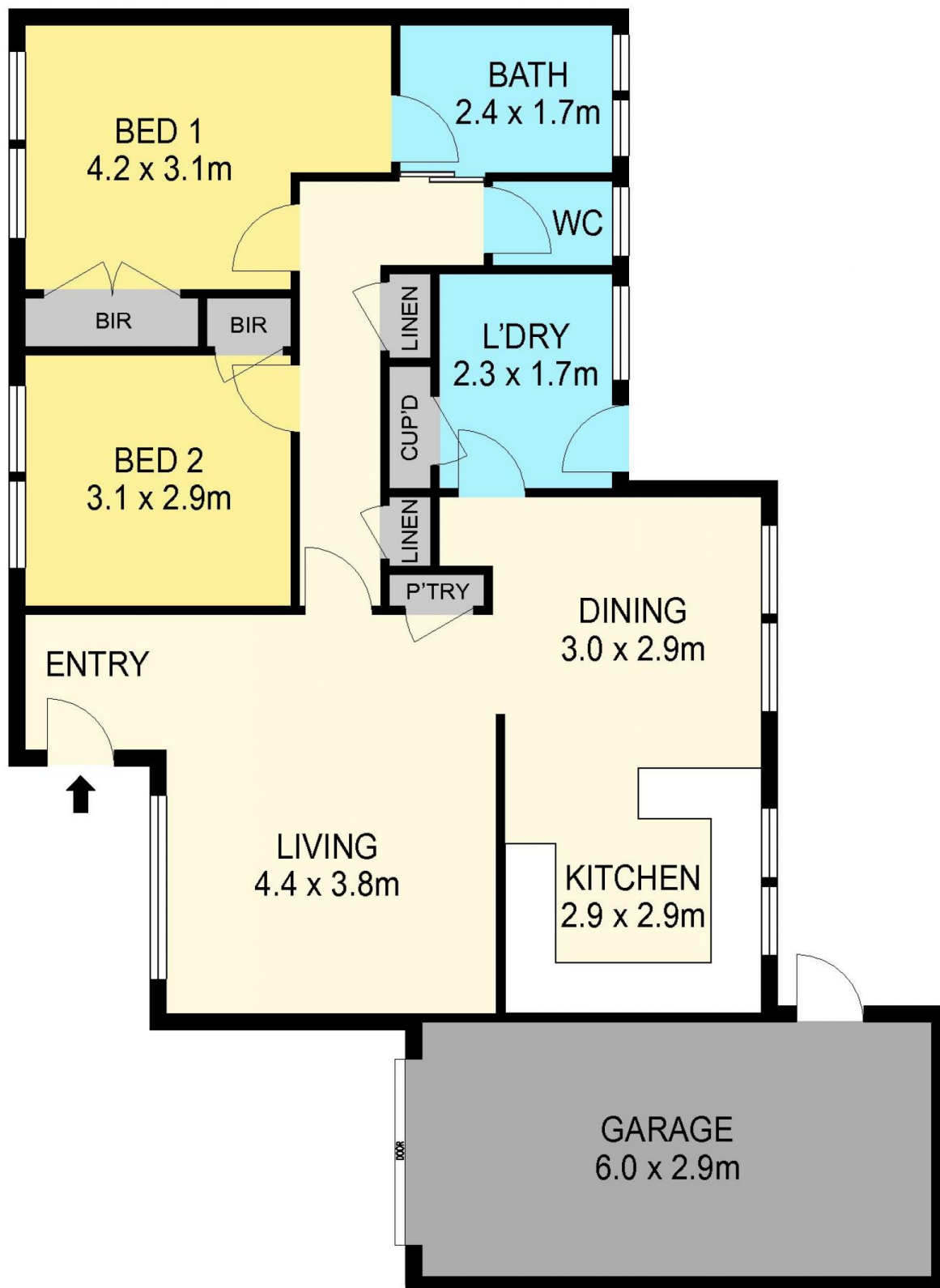
**Price** : \$ 318,000  
**Land Size** : 205 sqm  
**View** : <https://www.ballaratrealestate.com.au/sale/vic/ballarat-western-district/wendouree/residential/unit/7907449>



**Lachlan Sylvia**  
03 53312233  
0458 068 234



**Elijah Tong**  
5331 2233  
0437 900 972



#### DISCLAIMER

PLANS SHOWN ARE FOR MARKETING PURPOSES ONLY, ALL DIMENSIONS ARE APPROXIMATE AND NOT TO SCALE. THEY ARE SUBJECT TO ERRORS AND INACCURACIES AND NO LIABILITY WILL BE ACCEPTED. INTERESTED PARTIES SHOULD MAKE THEIR OWN INQUIRES.

Ballarat  
Real Estate

