



9 Furano Road Winter Valley VIC

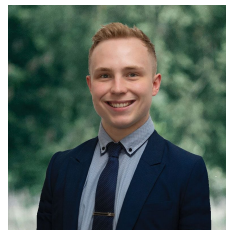
4 2 2

Welcome to the epitome of modern family living nestled in the prestigious Winterfield estate! This captivating residence, set on a comfortable 525m² (approx) parcel of land, offers a lifestyle of luxury and convenience. Immerse yourself in the vibrant atmosphere of Delacombe Town Centre, just a stone's throw away. From shopping, entertainment, and medical facilities to Aus post, eateries, and cafes, everything you desire is at your fingertips. Add to that the close proximity to schools and park lands making it an ideal haven for a flourishing family. As you approach, the contemporary brick veneer facade with rendered accents, manicured lawns and a welcoming path sets the stage for what lies beyond. Step inside to discover modern fixtures including vinyl flooring, down lighting, feature niches, and 2.4m doors - elevating its allure. This well-appointed home ...

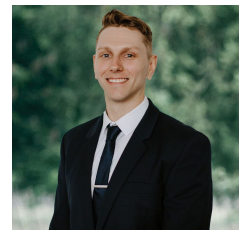
Price : \$ 615,000

Land Size : 525 sqm

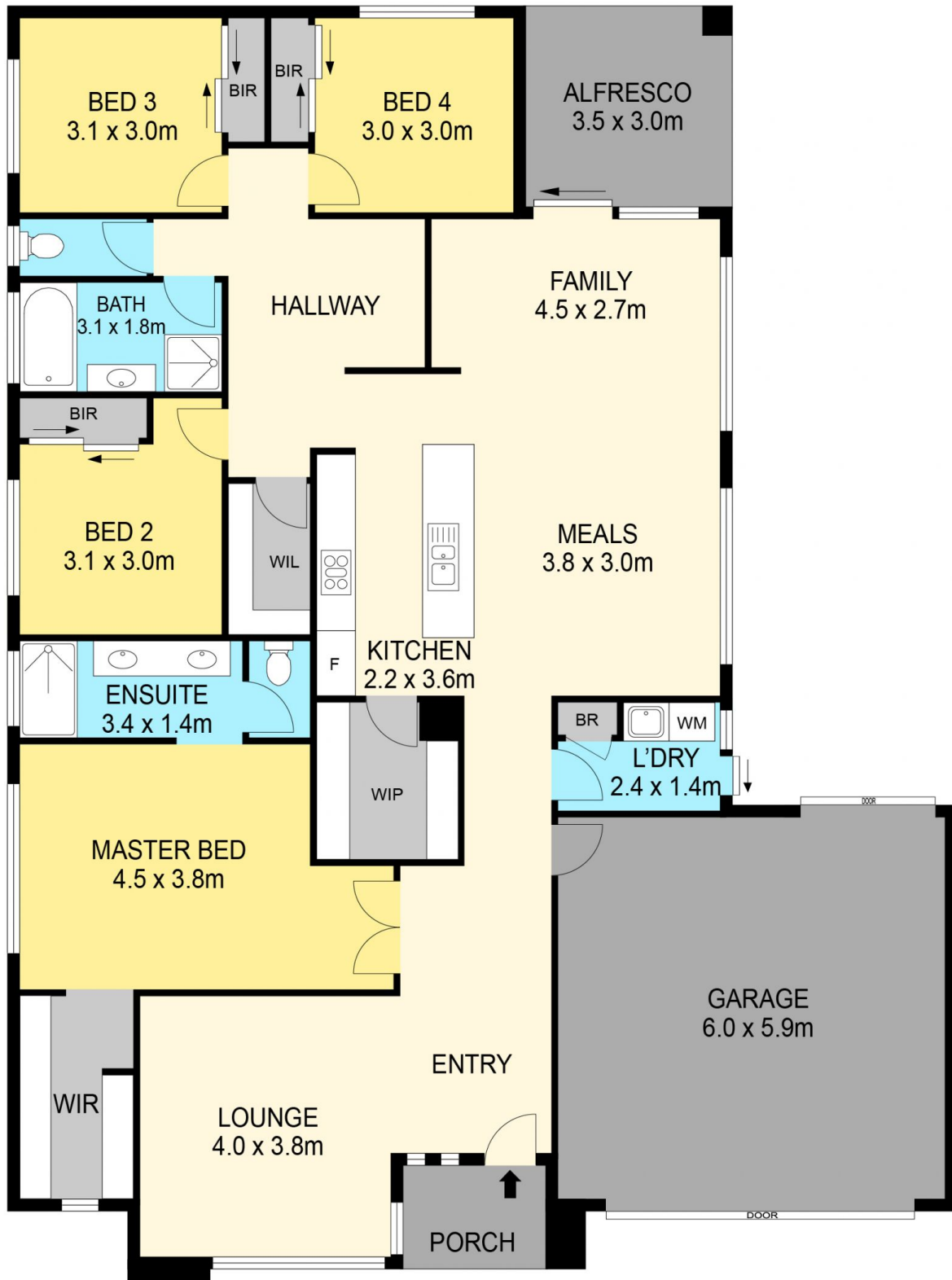
View : <https://www.ballaratrealestate.com.au/sale/vic/ballarat-western-district/winter-valley/residential/house/7907448>



Lachlan Sylvia
03 53312233
0458 068 234



Chris Just
5331 2233
0438 235 293



DISCLAIMER

PLANS SHOWN ARE FOR MARKETING PURPOSES ONLY. ALL DIMENSIONS ARE APPROXIMATE AND NOT TO SCALE. THEY ARE SUBJECT TO ERRORS AND INACCURACIES AND NO LIABILITY WILL BE ACCEPTED. INTERESTED PARTIES SHOULD MAKE THEIR OWN INQUIRES.

Ballarat
Real Estate

