

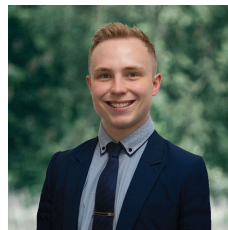


5 Cloud Close Redan VIC

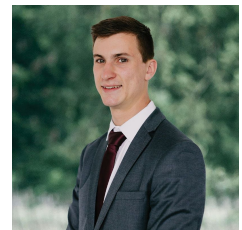
2 1 1

Nestled in the charming locale of Redan, this exceptional townhouse beckons with its quality and graces a comfortable 236m² (approx) plot of land. An enticing sanctuary awaits within, promising an unparalleled lifestyle just a short drive from the vibrant heart of Ballarat CBD and the Delacombe Town Centre. Indulge with a myriad of essential amenities, top-notch sporting facilities, and esteemed schools in close proximity, creating the perfect haven for anyone seeking a place to call home. Adorned with a contemporary brick veneer facade, the home extends a warm welcome with its single lock-up garage, front deck with veranda and minimal front gardens setting the stage for what lies within. Step inside to discover a well-appointed residence featuring two spacious bedrooms, both adorned with ceiling fans. The master bedroom boasts a walk-in robe, while the seco ...

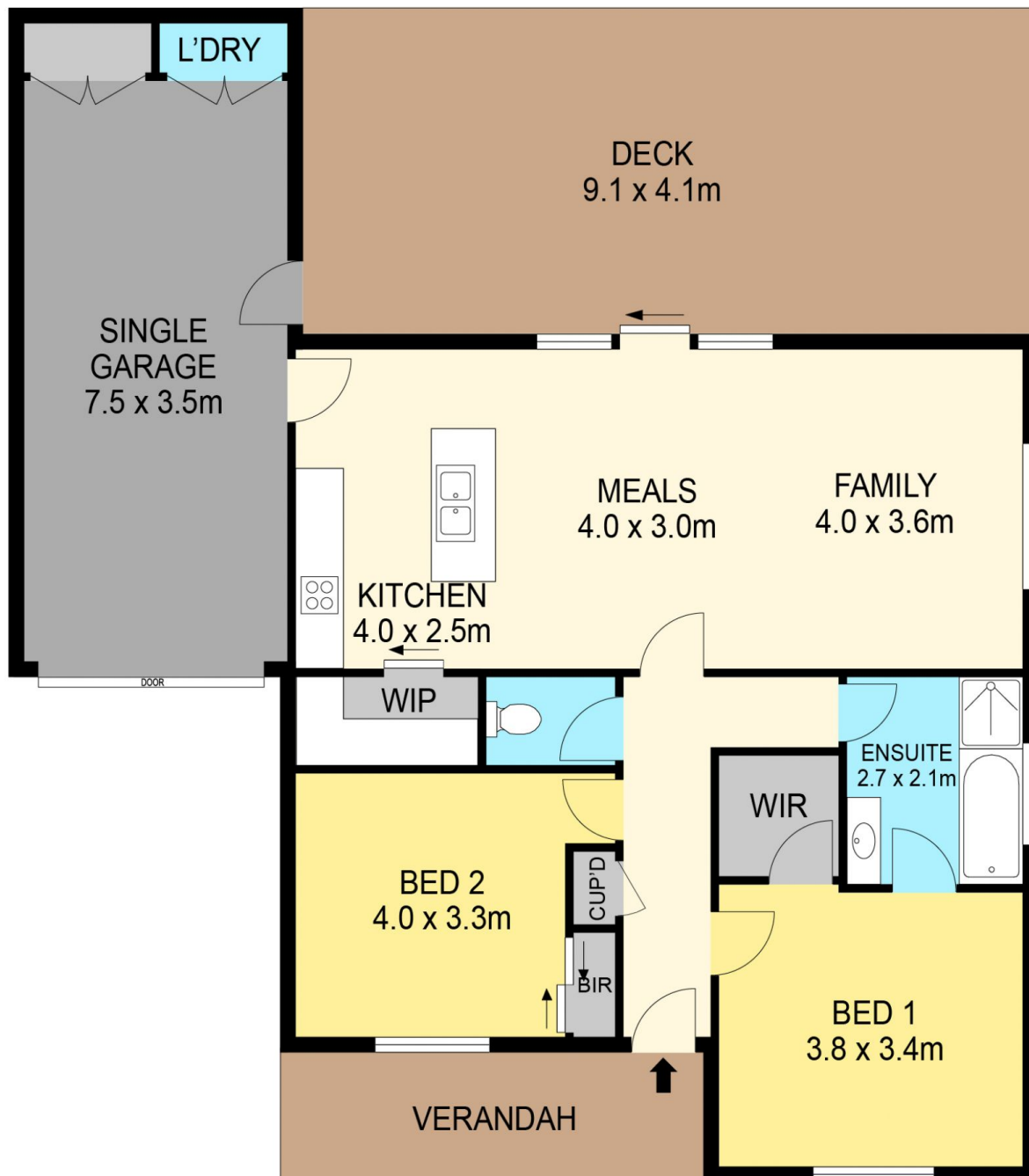
Price : \$ 350,000
Land Size : 236 sqm
View : <https://www.ballaratrealestate.com.au/sale/vic/ballarat-western-district/redan/residential/townhouse/7907447>



Lachlan Sylvia
03 53312233
0458 068 234



Elijah Tong
5331 2233
0437 900 972



DISCLAIMER

PLANS SHOWN ARE FOR MARKETING PURPOSES ONLY. ALL DIMENSIONS ARE APPROXIMATE AND NOT TO SCALE. THEY ARE SUBJECT TO ERRORS AND INACCURACIES AND NO LIABILITY WILL BE ACCEPTED. INTERESTED PARTIES SHOULD MAKE THEIR OWN INQUIRES.

Ballarat
Real Estate

