

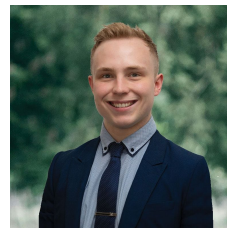


14 Fairway Court Invermay Park VIC

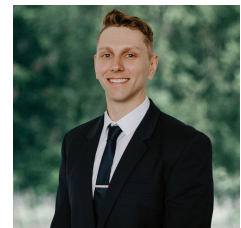
4 2 2

Nestled within the coveted Invermay Park neighborhood, this exquisite residence sits on an expansive 1017m² of pristine land, embodying the epitome of sophisticated living. Boasting a strategic location, a mere stone's throw from the vibrant heart of Ballarat CBD, this home is enveloped by esteemed primary and secondary schools making it an ideal haven for a growing family. A captivating first impression is crafted by the charming 80's brick veneer facade at the front, complemented by meticulously manicured front gardens and mature trees, creating a picturesque entrance to this distinguished abode. Within, the residence unfolds to reveal four generously proportioned bedrooms. The master suite stands as a testament to luxury, featuring an air conditioner, walk-in robe, built-in robe, and a private ensuite adorned with a shower, vanity boasting ample bench spa ...

Price : \$ 755,000
Land Size : 1017 sqm
View : <https://www.ballaratrealestate.com.au/sale/vic/ballarat-western-district/invermay-park/residential/house/7898502>



Lachlan Sylvia
03 53312233
0458 068 234



Chris Just
5331 2233
0438 235 293



DISCLAIMER

PLANS SHOWN ARE FOR MARKETING PURPOSES ONLY, ALL DIMENSIONS ARE APPROXIMATE AND NOT TO SCALE. THEY ARE SUBJECT TO ERRORS AND INACCURACIES AND NO LIABILITY WILL BE ACCEPTED. INTERESTED PARTIES SHOULD MAKE THEIR OWN INQUIRES.

Ballarat
Real Estate

