



30 Beartooth Drive Winter Valley VIC

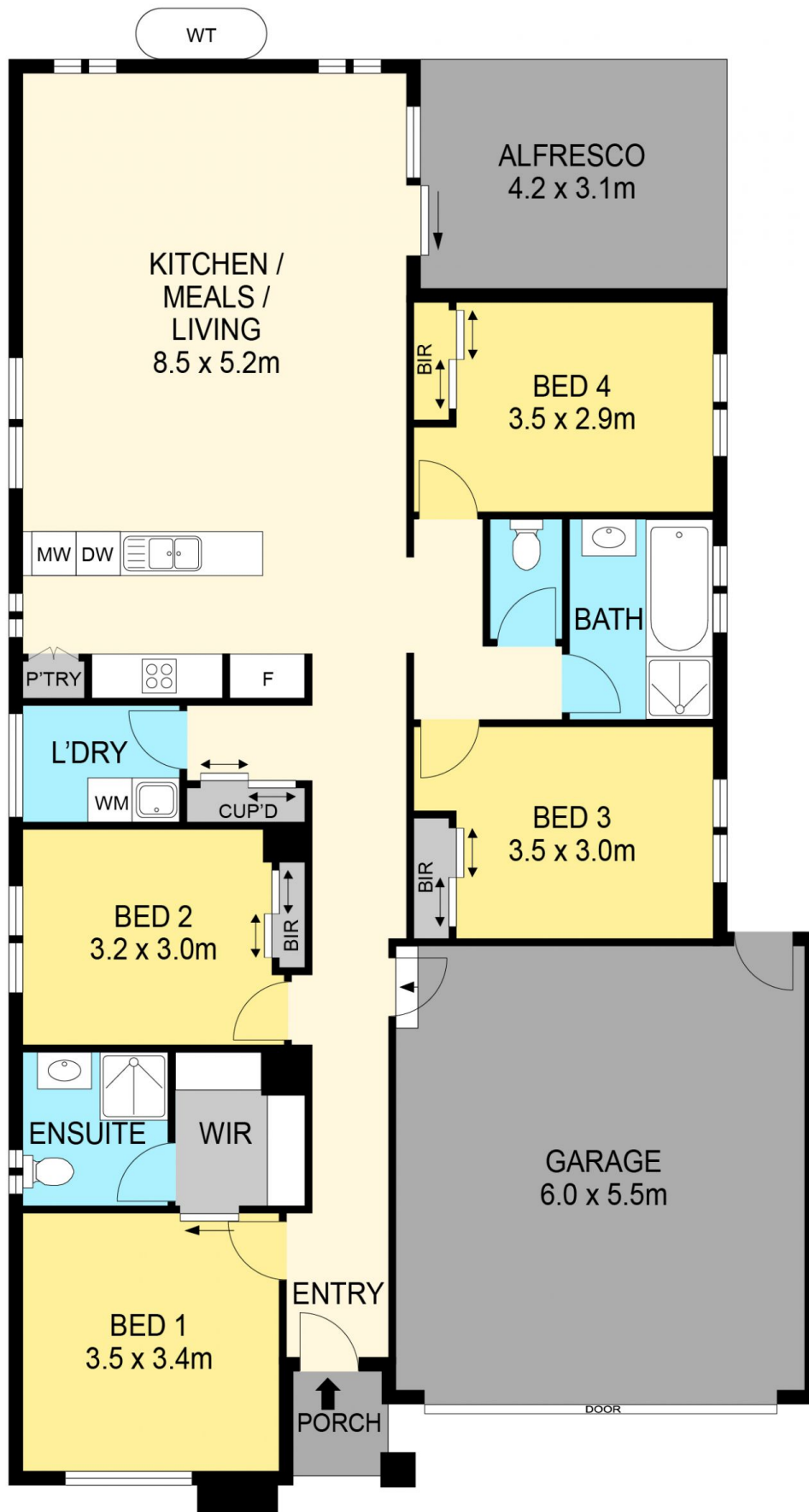
4 2 2

Embark on a fresh and exhilarating journey with this exceptional 4-bedroom, 2-bathroom family home that seamlessly marries tranquility with convenience. Meticulously crafted for contemporary living and lavish comfort, this residence offers the ease of single-level living. Immerse yourself in a generously proportioned open-plan interior featuring a designer kitchen, heating and cooling amenities, a stylishly tiled outdoor entertaining area, and the added convenience of a double garage with internal access. Located in the heart of Winter Valley, life here ensures effortless proximity to a diverse array of shops, services, and esteemed schools, all set against the backdrop of expansive parklands. Welcome to a residence that effortlessly blends modern functionality with serene surroundings—a perfect canvas for the next exciting chapter of your life. Call Blaise ...

Price : \$ 490,000
Land Size : 431 sqm
View : <https://www.ballaratrealestate.com.au/sale/vic/ballarat-western-district/winter-valley/residential/house/7893264>



Blaise Newnham
03 53312233
0423175643



DISCLAIMER

PLANS SHOWN ARE FOR MARKETING PURPOSES ONLY. ALL DIMENSIONS ARE APPROXIMATE AND NOT TO SCALE. THEY ARE SUBJECT TO ERRORS AND INACCURACIES AND NO LIABILITY WILL BE ACCEPTED. INTERESTED PARTIES SHOULD MAKE THEIR OWN INQUIRES.

Ballarat
Real Estate

