



143 Creswick Road Ballarat Central VIC

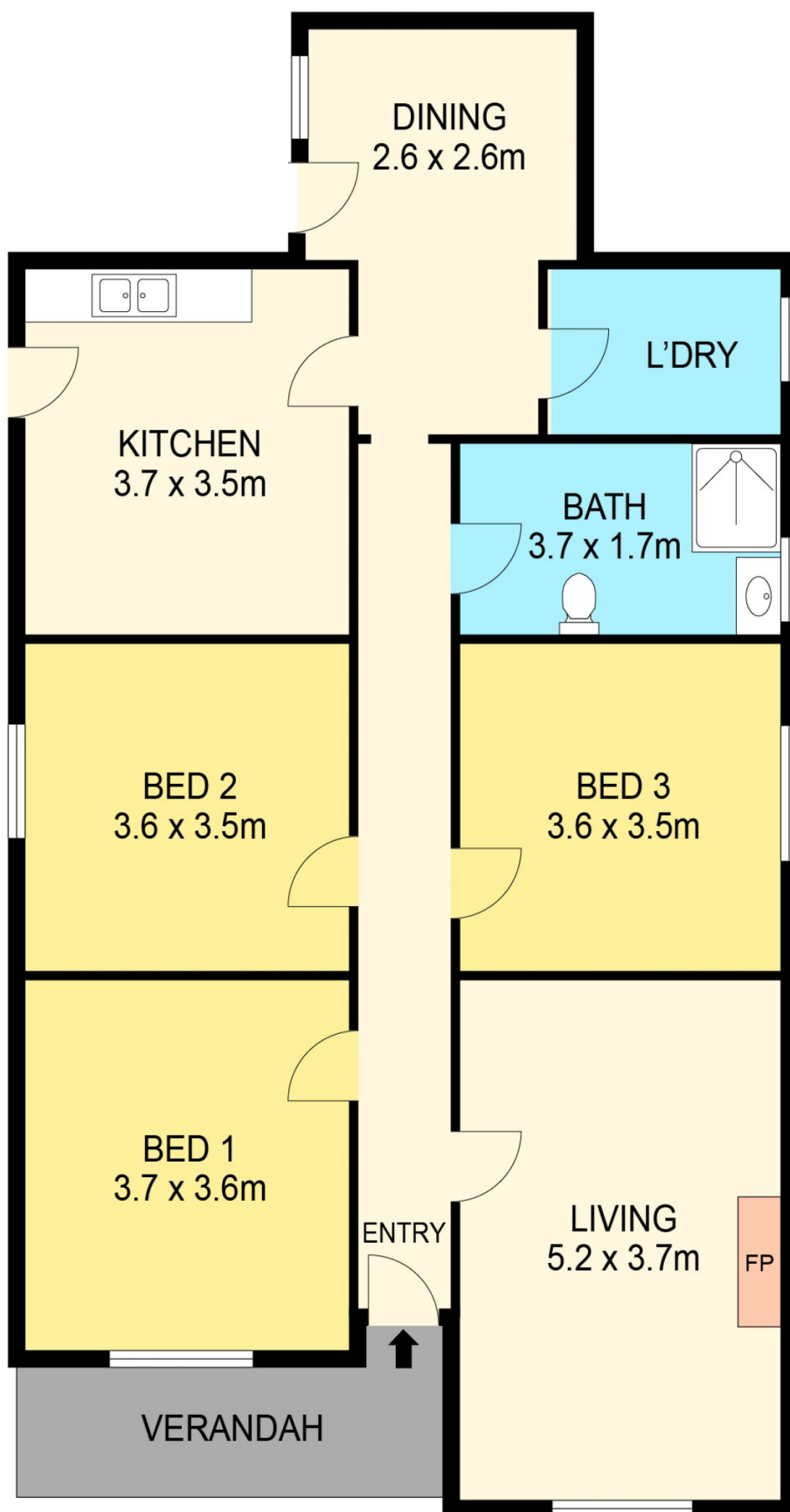
3 1 1

Ideally situated between Lake Wendouree and the Ballarat CBD and within walking distance to the Ballarat train station is this brilliant weatherboard home boasting high ceilings and gorgeous period details. Features of the home include a large and comfortable living room at the front of the home with gas heating, three bedrooms plus a study, updated kitchen/meals area with free standing island bench, dishwasher and ample cupboard space. The central bathroom is light, bright and spacious. The property also features a good sized and enclosed rear yard as well as a double length garage that is accessed from Johnson Street. The property has loads of potential and will make a great addition to any investment portfolio or future renovation project. Be sure to inspect. Call Blaise Newnham on 0423 175 643

Price : \$ 550,000
Land Size : 446 sqm
View : <https://www.ballaratrealestate.com.au/sale/vic/ballarat-western-district/ballarat-central/residential/house/7891549>



Blaise Newnham
03 53312233
0423175643



DISCLAIMER

PLANS SHOWN ARE FOR MARKETING PURPOSES ONLY. ALL DIMENSIONS ARE APPROXIMATE AND NOT TO SCALE. THEY ARE SUBJECT TO ERRORS AND INACCURACIES AND NO LIABILITY WILL BE ACCEPTED. INTERESTED PARTIES SHOULD MAKE THEIR OWN INQUIRES.

Ballarat
Real Estate

