



3 Regal Drive Alfredton VIC

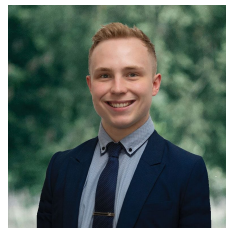
4 2 2

Nestled in the prestigious Insignia Estate, discover this exquisite two-storey residence set on a comfortable 311m² parcel of land. Ideally positioned in a blue-chip locale with renowned schools, lush parks, medical facilities and the Ballarat Golf Course at your fingertips, this is an unparalleled opportunity to claim an exceptional home. Step inside to be greeted by a contemporary ambiance, featuring chic decorative cornices and stylish fixtures throughout. The front living area beckons with built-in cabinetry, providing the perfect retreat for relaxation. Ascending to the first floor, you'll find four generously sized bedrooms, with the master suite showcasing a walk-in robe and a private ensuite. The remaining three bedrooms are equipped with built-in robes and share a family bathroom boasting a double vanity, freestanding bath and a walk-in shower, comp ...

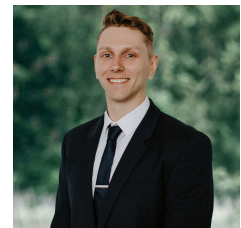
Price : \$ 675,000

Land Size : 311 sqm

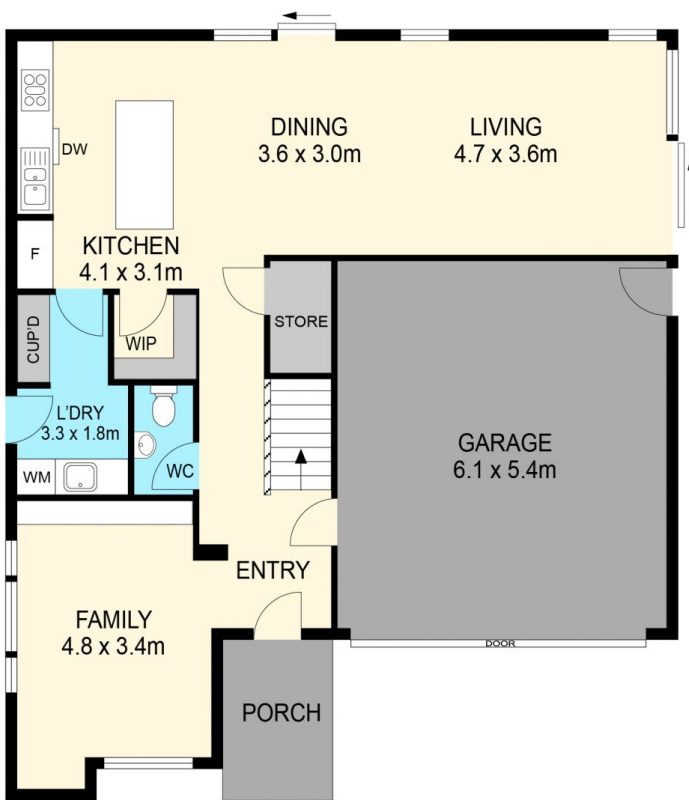
View : <https://www.ballaratrealestate.com.au/sale/vic/ballarat-western-district/alfredton/residential/house/7871856>



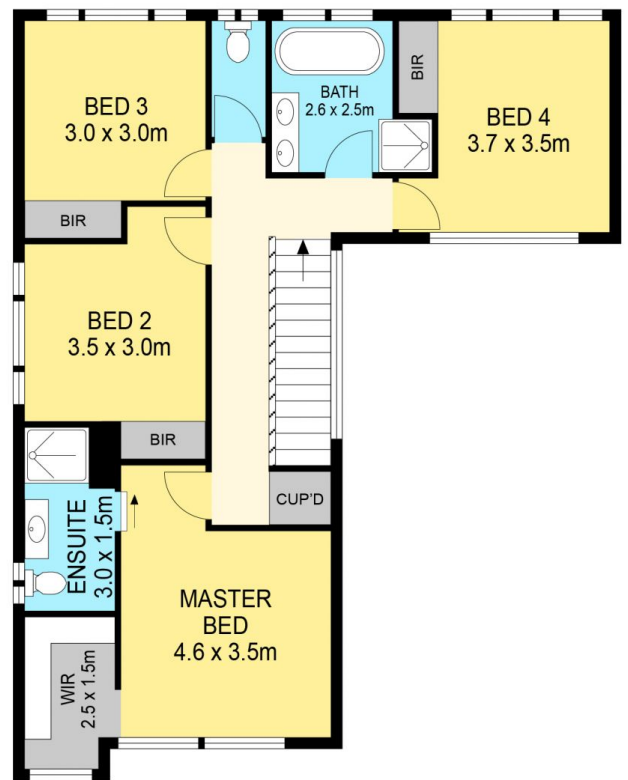
Lachlan Sylvia
03 53312233
0458 068 234



Chris Just
5331 2233
0438 235 293



GROUND FLOOR



FIRST FLOOR

DISCLAIMER

PLANS SHOWN ARE FOR MARKETING PURPOSES ONLY, ALL DIMENSIONS ARE APPROXIMATE AND NOT TO SCALE. THEY ARE SUBJECT TO ERRORS AND INACCURACIES AND NO LIABILITY WILL BE ACCEPTED. INTERESTED PARTIES SHOULD MAKE THEIR OWN INQUIRES.

Ballarat
Real Estate

