

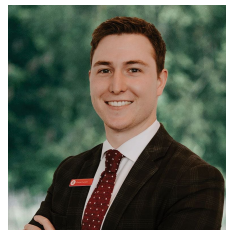


## 20 Lock Street Smythesdale VIC

2 1 2

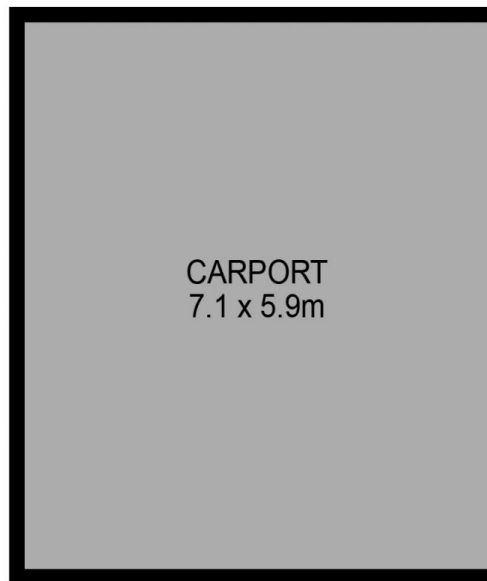
Perfectly positioned walking distance to shops, medical and school is this immaculately presented home on a significant residential block. The property features 2-bedrooms, main bedroom with BIR, a large kitchen with ample storage and island bench. Adjoining the kitchen is a spacious living and dining space with a versatile floorplan and sliding door access to two decked entertaining areas. Heating/cooling the home is supplied by a large split system in the main living area plus wood combustion fire and double-glazed windows perfect for winter months. The main bathroom offers a walk-in shower and separate toilet off the laundry. The property also features a 6 star energy rating. Externally on the approx. 1018sqm block enjoy the private views over of the matured gardens that line the backyard. The two water tanks supply the toilet and gardens as well as havin

**Price** : \$ 505,000  
**Land Size** : 1018 sqm  
**View** : <https://www.ballaratrealestate.com.au/sale/vic/ballarat-western-district/smythesdale/residential/house/7862992>

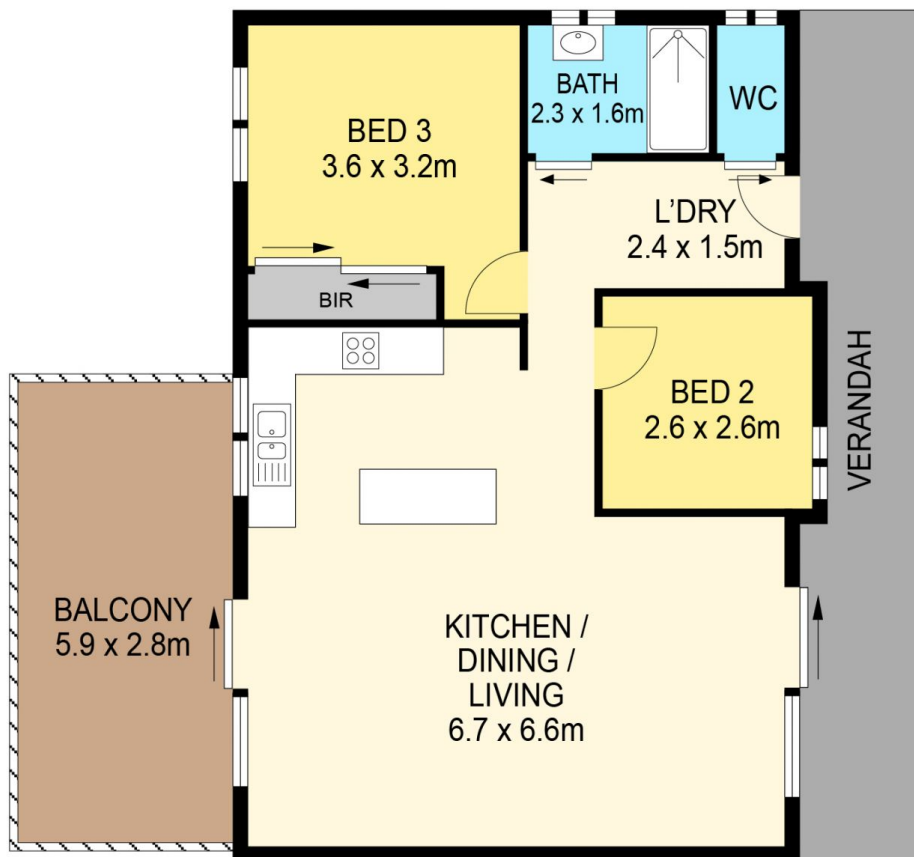


**Oscar Currell**  
 03 53312233  
 0499 070 759





(NOT IN POSITON)



**DISCLAIMER**

PLANS SHOWN ARE FOR MARKETING PURPOSES ONLY, ALL DIMENSIONS ARE APPROXIMATE AND NOT TO SCALE. THEY ARE SUBJECT TO ERRORS AND INACCURACIES AND NO LIABILITY WILL BE ACCEPTED. INTERESTED PARTIES SHOULD MAKE THEIR OWN INQUIRES.

**Ballarat**  
Real Estate

